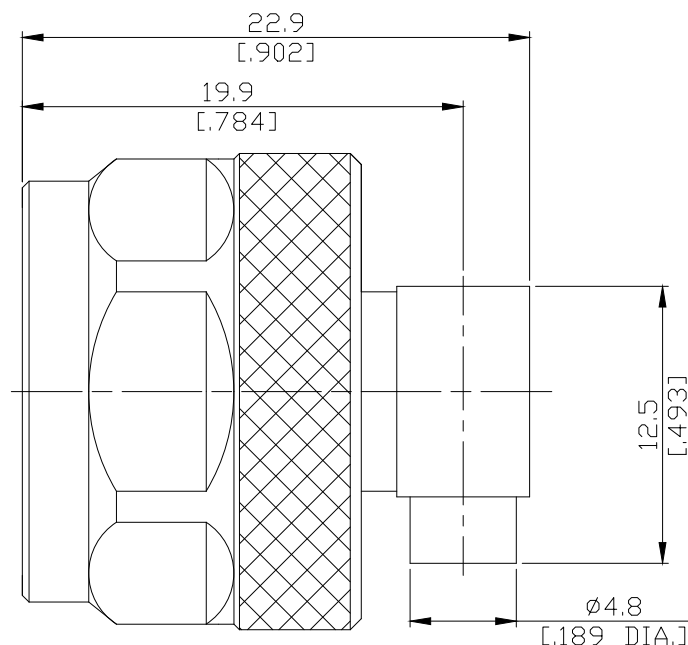


N Male Right Angle Connector Clamp/Solder Attachment for RG141, DC-11GHz VSWR1.15

N1E59-0141A / 144



All dimensions are in mm [inch]

Tolerances according to DIN ISO 2768-mH

Interface

According to

IEC 61169-16, MIL-STD-348B/304

Electrical Data

Impedance

50 Ω

Frequency

DC to 11 GHz

VSWR (Return Loss)

≤ 1.15 (≥ 23.1 dB)

Insertion Loss

≤ 0.05 × √F (GHz) dB

Insulation Resistance

≥ 5 × 10³ MΩ

Center Contact Resistance

≤ 1 mΩ

Outer Contact Resistance

≤ 1 mΩ

Working voltage

1400 V rms

Power handling

1000 W @ 1 GHz

700 W @ 2 GHz

RF-leakage

≥ 128 dB up to 1 GHz

- Limitations are possible due to the used cable type -

Material And Plating

Connector parts	Material	Plating
Centre contact	Brass	Gold plating, 3 pinch (Non-magnetic nickel-phosphorus underplating, 80 pinch)
Body	Brass	Copper-Tin-Zinc Alloy
Insulator	PTFE	
Gasket	Silicone Rubber	
Coupling nut	Brass	Copper-Tin-Zinc Alloy

The facts and figures herein are carefully compiled to the best of our knowledge, but they are intended for general informational purposes only. In the effort to improve our products, we reserve the right to make changes judged to be necessary.

Rev.:
Date:
JUL/16/2021

Rosnol RF/Microwave Technology Co., Ltd.
www.rosnol.com; info@rosnol.com
Phone: +886-3-463-5095 / Fax: +886-3-463-5952
N-CAGE Code: SFKK0 / ISO9001 Certified

Page

1/3

N Male Right Angle Connector Clamp/Solder Attachment for RG141, DC-11GHz VSWR1.15

N1E59-0141A / 144

Mechanical Data

Coupling mechanisms	Screw-lock
Mating Cycles	min. 500
Centre Contact	Plug-in
Cable entry	Soldered
Center Contact Captivation: axial	≥ 28 N
radial	≥ 3 Ncm
Coupling Test Torque	max. 1.7 Nm
Recommended Torque	0.7 Nm to 1.1 Nm

Environmental Data

Temperature Range	-55°C to +155°C
Thermal shock	MIL-STD-202, Meth. 107, Cond. B
Corrosion	MIL-STD-202, Meth. 101, Cond. B
Vibration	MIL-STD-202, Meth. 204, Cond. B
Shock	MIL-STD-202, Meth. 213, Cond. I
Moisture Resistance	MIL-STD-202, Meth. 106
RoHS	compliant

Suitable Cables

RG402, .141" Cables

Packing

Single or 100

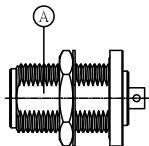


N Jack (Female) Connector Cable Entry: Solder
Contact Pin: Plug-in Attachment Bulkhead Mount
For RG402, .141" Cables, DC-11 GHz VSWR1.25

N1E59-0141A / 144

Connector Type:	N2EA50-EZ141A/94	Inner Conductor Contact:	Plug-in
Suitable Cable:	RG402, .141 Semi-Rigid and Semi-Flex Cables RG402, .141 Flexible Cables	Outer Conductor Contact:	Soldered

Parts List of Connector:



Assembly Steps:

Picture	Process	Attention/Check	Tools Required
<p>For Semi-Rigid and Semi-Flex Cables:</p>	<p>For Semi-Rigid and Semi-Form cable :</p> <p>Trim cable according to drawing. Chamfer center contact. Dimension 15 mm applies to the FEP jacket cables.</p>	<p>Strip the cable end perpendicular to its axis. Do not damage center contact.</p>	<p>Blades Trim tools</p>
<p>For Flexible Cables:</p>	<p>For Flexible Cable:</p> <p>Remove the cable jacket according to the picture and put the braid into liquid tin. Remove cable dielectric according to the drawing. Chamfer center contact.</p>	<p>Do not damage center contact, dielectric or braid. The liquid tin has to cover a length of 15 mm. If the cable does not fit into the cable entry, utilize a flat-nose plier to adjust the outer contact.</p>	<p>Blades Solder pot Flat-nose plier</p>
	<p>Slide connector body "A" over the cable. Solder connector body "A" to the cable (see drawing).</p>	<p>Avoid excessive heat. Immediately use alcohol to wipe the soldered area to reduce joint temperature and remove residuals.</p>	<p>Solder iron</p>