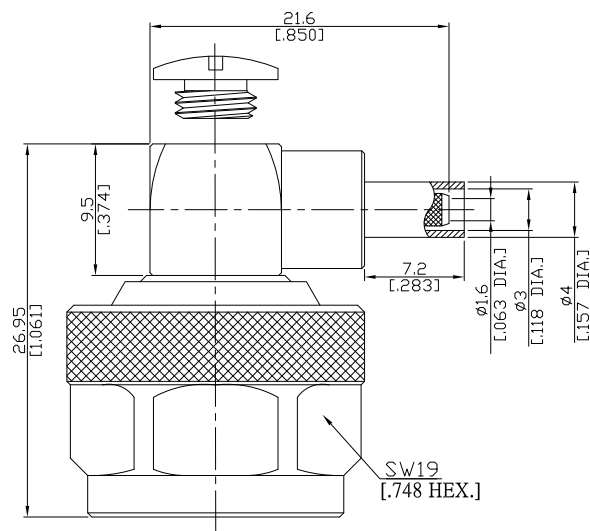




N(Male) Right Angle Cable Plug

N1C59-G316A/144



All dimensions are in mm [inch]

Tolerances according to DIN ISO 2768-mH

**Interface**

According to IEC 60169-16; MIL-STD-348A/304

**Electrical Data**

Impedance 50  $\Omega$   
Frequency DC to 11 GHz  
VSWR (Return Loss)  $\leq 1.22$  ( $\geq 20.1$  dB)  
Insertion Loss  $\leq 0.05$

- Limitations are possible due to the used cable type and manufacturing method -

**Mechanical Data**

Coupling mechanisms Screw-lock  
Centre contact Soldered  
Cable entry Crimped

**Environmental Data**

Temperature range -65°C to +165°C  
RoHS compliant

**Material And Plating**

Connector parts	Material	Plating
Centre contact	Brass	Gold plating(Nickel underplated)
Body	Brass	Copper-Tin-Zinc Alloy
Insulator	PTFE	
Gasket	Silicone Rubber	
Coupling nut	Brass	Copper-Tin-Zinc Alloy
Crimp ferrules	Brass	Copper-Tin-Zinc Alloy

**Suitable Cables**

RG-174, RG-188A, RG-316, BELDEN 7805

**Packing**

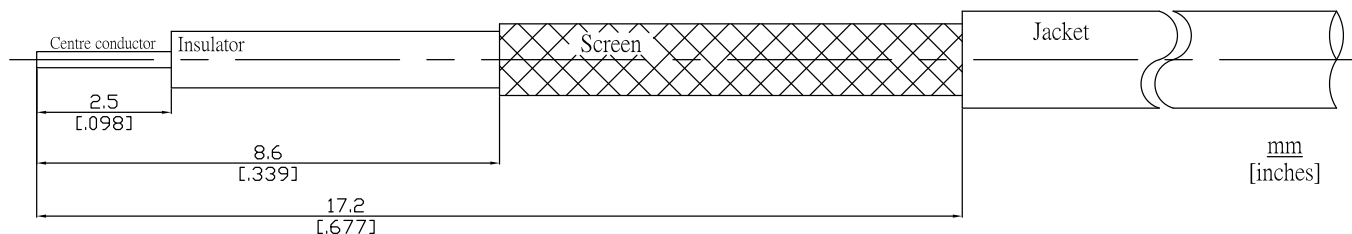
Single or 100



N(Male) Right Angle Cable Plug

N1C59-G316A/144

Recommended Cable Stripping Dimensions



Crimp Dimensions

Crimp ferrule

3.25 mm [0.128 inch] HEX