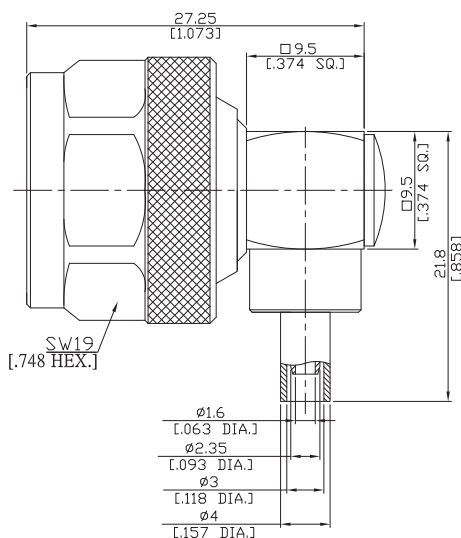




# N Right Angle Cable Plug

N1C59-G174A/144



All dimensions are in mm [inch]

Tolerances according to DIN ISO 2768-mH

## Interface

According to MIL-C-39012;MIL-STD-348A/304

## Electrical Data

Impedance 50 Ω  
Frequency DC to 11 GHz  
VSWR (Return Loss) ≤ 1.07 (≥ 30 dB) DC to 2 GHz  
≤ 1.15 (≥ 23 dB) 2 to 4 GHz  
≤ 1.22 (≥ 20 dB) 4 to 8 GHz  
Insertion Loss ≤ 0.05 DC to 8 GHz

- Limitations are possible due to the used cable type -

## Mechanical Data

Coupling mechanisms Screw-lock  
Centre contact Soldered  
Cable entry Crimped

## Environmental Data

Temperature range -65°C to +165°C  
RoHS compliant

## Material And Plating

Connector parts	Material	Plating
Centre contact	Brass	Gold plating(Nickel underplated)
Body	Brass	Copper-Tin-Zinc Alloy
Insulator	PTFE	
Gasket	Silicone Rubber	
Coupling nut	Brass	Copper-Tin-Zinc Alloy
Crimp ferrules	Brass	Copper-Tin-Zinc Alloy

## Suitable Cables

RG-188A, RG-316

## Packing

Single or 100