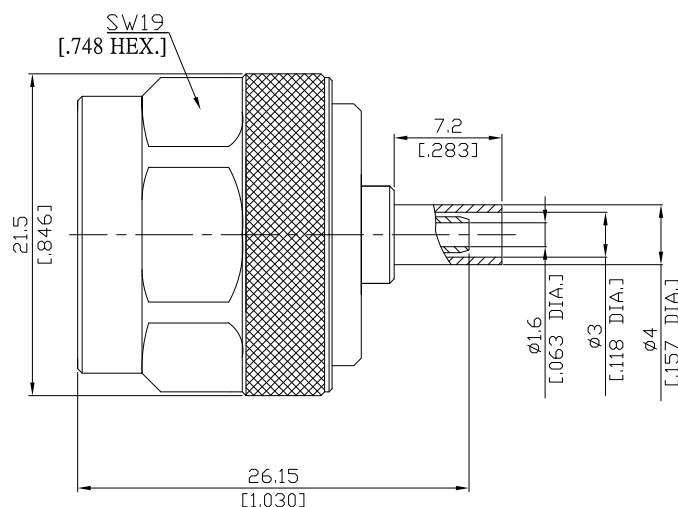


N(Male) Straight Cable Plug

N1C50-G316A/144



All dimensions are in mm [inch]

Tolerances according to DIN ISO 2768-mH

Interface

According to IEC 61169-16; MIL-STD-348A/304

Electrical Data

Impedance 50 Ω

Frequency DC to 6 GHz

VSWR (Return Loss) ≤ 1.20 (≥ 20.8 dB)

Insertion Loss ≤ 0.05

Working voltage (at sea level) 900 V rms

- Limitations are possible due to the used cable type and manufacturing method -

Mechanical Data

Coupling mechanisms Screw-lock
Centre contact Soldered or crimped
Cable entry Crimped

Environmental Data

Temperature range -65°C to +165°C
RoHS compliant

Material And Plating

Connector parts	Material	Plating
Centre contact	Brass	Gold plating(Nickel underplated)
Body	Brass	Copper-Tin-Zinc Alloy
Insulator	PTFE	
Gasket	Silicone Rubber	
Coupling nut	Brass	Copper-Tin-Zinc Alloy
Crimp ferrules	Brass	Copper-Tin-Zinc Alloy

Suitable Cables

RG 174, RG 188A, RG 316, BELDEN 7805

Packing

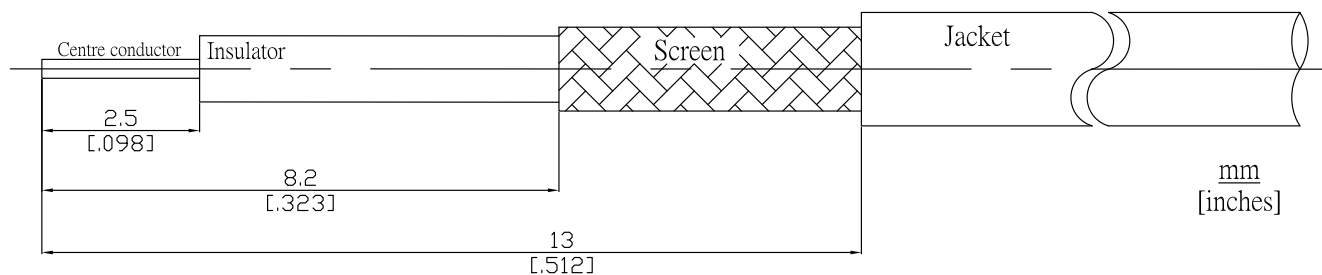
Single or 100



N(Male) Straight Cable Plug

N1C50-G316A/144

Recommended Cable Stripping Dimensions



Crimp Dimensions

Crimp ferrule 3.25 mm [.128 inch] HEX
Center Contact 0.7 mm [.028 inch] SQ