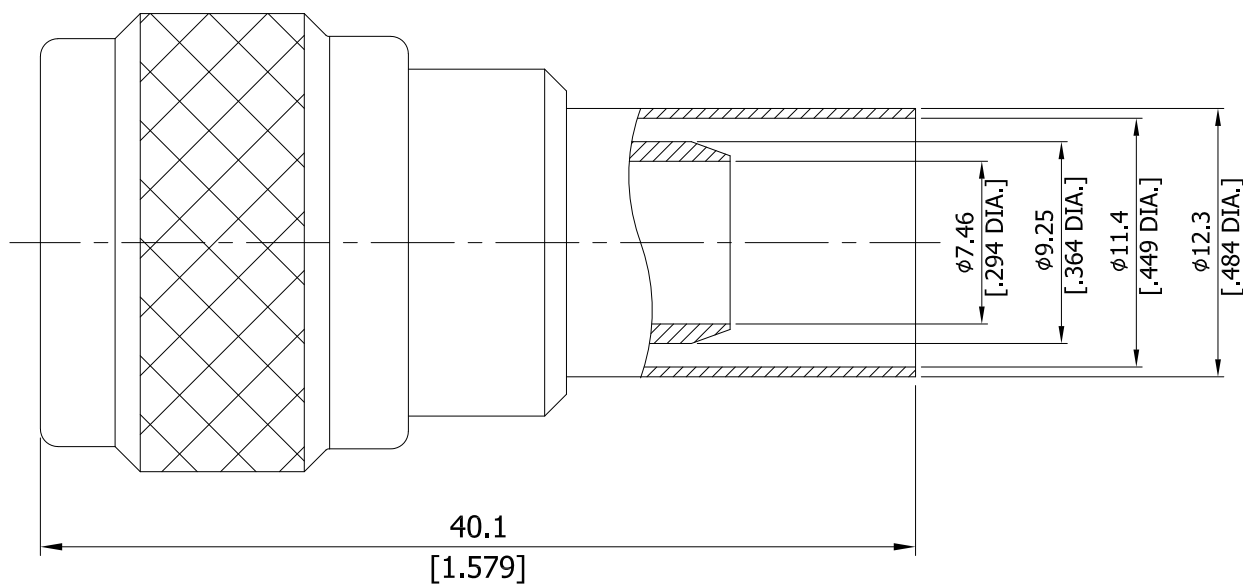


N Plug (Male) Connector Outer Conductor: Crimp
Center Conductor: Solder Attachment DC-11GHz VSWR1.15

N1C50-G214C / 144



All dimensions are in mm [inch]

Tolerances according to DIN ISO 2768-mH

Interface

According to

IEC 61169-16

MIL-STD-348B/304

Electrical Data

Impedance	50 Ω
Frequency	DC to 11 GHz
VSWR (Return Loss)	≤ 1.15 (≥ 23 dB)
Insertion Loss	≤ 0.5
Insulation Resistance	≥ 5 G Ω
Center Contact Resistance	≤ 1 m Ω
Outer Contact Resistance	≤ 0.25 m Ω
Working Voltage	1400 V rms

- Limitations are possible due to the used cable type -

Material And Plating

Piece Parts	Material	Plating
Centre contact	Brass	Gold plating, 3 μ inch (Non-magnetic nickel-phosphorus underplating, 80 μ inch)
Body	Brass	Copper-Tin-Zinc-Alloy
Insulator	PTFE	
Gasket	Silicone Rubber	
Coupling nut	Brass	Copper-Tin-Zinc-Alloy
Ferrule	Brass	Copper-Tin-Zinc-Alloy

The facts and figures herein are carefully compiled to the best of our knowledge, but they are intended for general informational purposes only. In the effort to improve our products, we reserve the right to make changes judged to be necessary.

Rev.:
Date: 12/7/2020

Rosnol RF/Microwave Technology Co., Ltd.
www.rosnol.com; info@rosnol.com
Phone: +886-3-463-5095 / Fax: +886-3-463-5952
N-CAGE Code: SFKK0 / ISO9001 Certified

Page

1/2

N Plug (Male) Connector Outer Conductor: Crimp
Center Conductor: Solder Attachment DC-11GHz VSWR1.15

N1C50-G214C / 144

Mechanical Data

Coupling Mechanisms	Screw-Lock
Mating Cycles	≥ 500
Coupling Nut Retention	≥ 450 N
Center contact captivation: axial	≥ 28 N
Coupling Test Torque	≤ 1.7 Nm
Recommended Torque	0.7 Nm to 1.1 Nm
Centre Contact	Soldered
Cable Entry	Crimped

Environmental Data

Temperature Range	-65°C to +165°C
Thermal Shock	MIL-STD-202, Method 107, Condition B
Corrosion	MIL-STD-202, Method 101, Condition B
Vibration	MIL-STD-202, Method 204, Condition B
Shock	MIL-STD-202, Method 213, Condition I
Moisture Resistance	MIL-STD-202, Method 106
RoHS	compliant

Suitable Cables

RG214

Weight

N/A

Packing

Single or 100