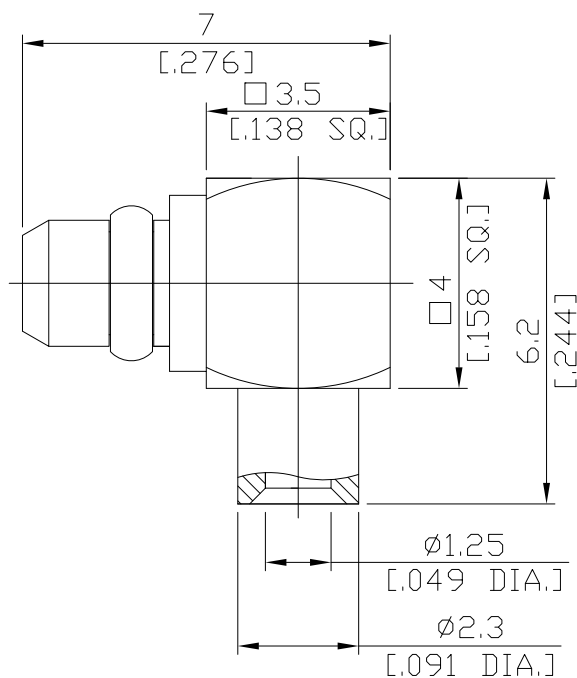


MMCX Plug Right Angle Connector Solder Attachment for .047  
DC-6GHz, VSWR1.25

**MMCX1E59-0047A / 11**



All dimensions are in mm [inch]

Tolerances according to DIN ISO 2768-mH

**Interface**

According to IEC 61169-52

**Electrical Data**

Impedance	50 $\Omega$
Frequency	DC to 6 GHz
VSWR (Return Loss)	$\leq 1.22$ ( $\geq 20$ dB)
Insulation Resistance	$\geq 5$ G $\Omega$
Centre contact resistance	$\leq 5.0$ m $\Omega$
Outer contact resistance	$\leq 2.5$ m $\Omega$
Working Voltage (at sea level)	170 V rms
RF Leakage	$\geq 70$ dB up to 1 GHz

-VSWR in application depends decisive on cable assembly process-

**Material And Plating**

Piece Parts	Material	Plating
Centre Contact	Brass	Gold plating (Non-magnetic nickel-phosphorus underplating)
Body	Brass	Gold plating (Non-magnetic nickel-phosphorus underplating)
Insulator	PTFE	
Gasket	Silicone Rubber	

MMCX Plug Right Angle Connector Solder Attachment for .047  
DC-6GHz, VSWR1.25

**MMCX1E59-0047A / 11**

**Mechanical Data**

Coupling mechanisms	Snap-on
Centre conduct	Soldered
Cable entry	Soldered
Mating Cycles	≥ 500
Center Contact Captivation	≥ 10 N
Engagement force	≤ 15 N
Disengagement force	6 to 15 N

**Environmental Data**

Temperature Range	-55°C to +155°C
Thermal shock	MIL-STD-202, Method 107, Condition F
Corrosion	salt spray test acc. to MIL-STD-202, Method 101, Condition B
Vibration	MIL-STD-202, Method 204, Condition C
Shock	MIL-STD-202, Method 213, Condition B
Moisture Resistance	MIL-STD-202, Method 106
RoHS	compliant

**Suitable Cables**

RSF 047, RSR 047, RSF 047 FEP, RSF 047 PVC

**Packing**

Single or 100