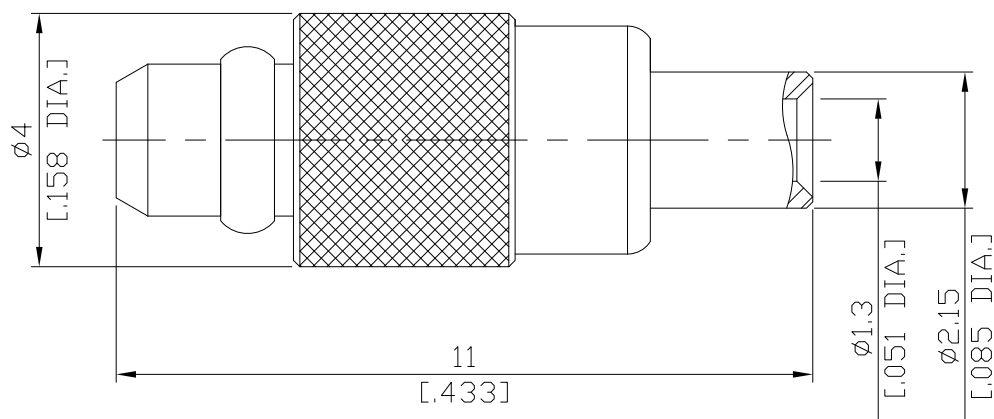


**MMCX (Male) Straight
Cable Solder Plug**

MMCX1E50-0047A/11



All dimensions are in mm [inch]

Tolerances according to DIN ISO 2768-mH

Interface

According to N/A

Electrical Data

Impedance 50 Ω

Frequency DC to 6 GHz

- Limitations are possible due to the used cable type and manufacturing method -

Mechanical Data

Coupling mechanisms Snap-lock

Centre contact Soldered

Cable entry Soldered

Environmental Data

Temperature range -55°C to +155°C

RoHS compliant

Material And Plating

Connector parts	Material	Plating
Centre contact	Brass	Gold plating(Nickel underplated)
Body	Brass	Gold plating(Nickel underplated)
Insulator	PTFE	

Suitable Cables

RSF 047, RSR 047, RSF 047 FEP, RSF 047 PVC

Packing

Single or 100