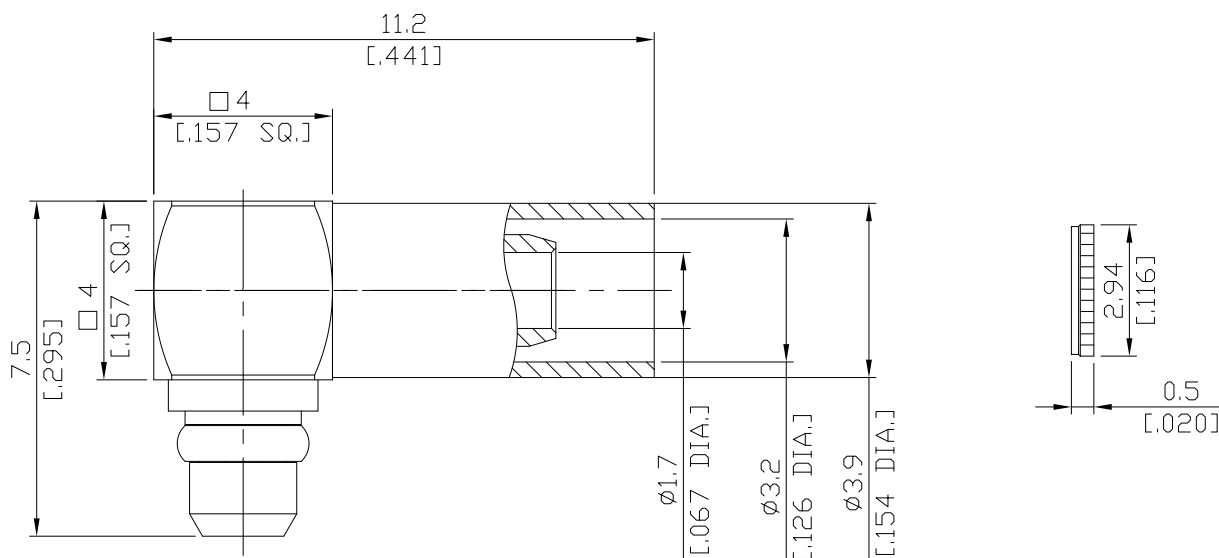


MMCX Right Angle Cable Plug
DC-6GHz VSWR1.22

MMCX1C59-G316B / 11



All dimensions are in mm [inch]

Tolerances according to DIN ISO 2768-mH

Interface

According to IEC 61169-52

Electrical Data

Impedance	50 Ω
Frequency	DC to 6 GHz
VSWR (Return Loss)	≤ 1.22 (≥ 20 dB)
Insulation Resistance	≥ 5 GΩ
Centre contact resistance	≤ 5.0 mΩ
Outer contact resistance	≤ 2.5 mΩ
Working Voltage (at sea level)	170 V rms
RF Leakage	≥ 70 dB up to 1 GHz

Material And Plating

Piece Parts	Material	Plating
Centre Contact	Brass	Gold plating, 3 μinch (Non-magnetic nickel-phosphorus underplating, 80 μinch)
Body	Brass	Gold plating, 3 μinch (Non-magnetic nickel-phosphorus underplating, 80 μinch)
Insulator	PEI	
Gasket	Silicone Rubber	

MMCX Right Angle Cable Plug
DC-6GHz VSWR1.22

MMCX1C59-G316B / 11

Mechanical Data

Coupling mechanisms	Snap-lock
Mating Cycles	≥ 500
Center Contact Captivation	≥ 10 N
Engagement force	≤ 15 N
Disengagement force	6 to 15 N

Environmental Data

Temperature Range	-55°C to +155°C
Thermal shock	MIL-STD-202, Method 107, Condition F
Corrosion	MIL-STD-202, Method 101, Condition B
Vibration	MIL-STD-202, Method 204, Condition C
Shock	MIL-STD-202, Method 213, Condition I
Moisture Resistance	MIL-STD-202, Method 106
RoHS	compliant

Suitable Cables

RG 316/U, RG 174 A/U, RG 188, G 02232, BELDEN 7805

Packing

Single or 100