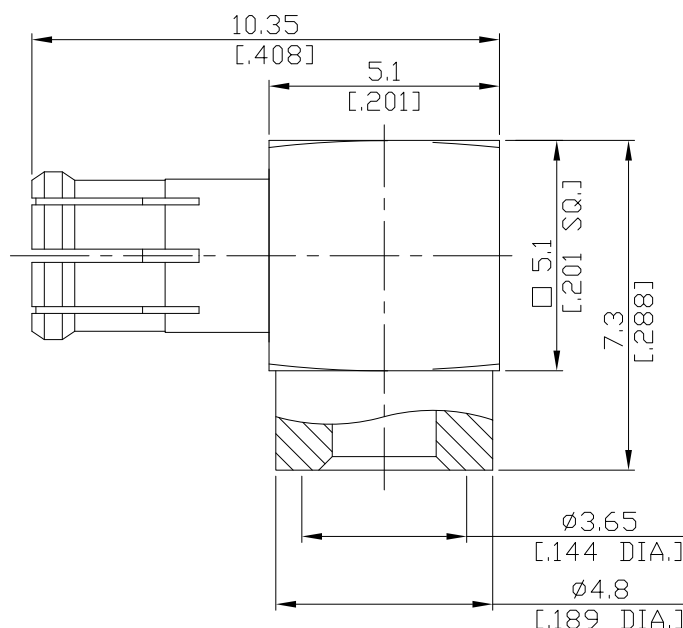


MCX Right Angle Cable Plug

MCX1E59-0141A/1H



All dimensions are in mm [inch]

Tolerances according to DIN ISO 2768-mH

Interface

According to CECC 22 220; IEC 60169-36

Electrical Data

Impedance 50 Ω

Frequency DC to 6 GHz

- Limitations are possible due to the used cable type and manufacturing process -

Mechanical Data

Coupling mechanisms Snap-lock

Centre contact Soldered

Cable entry Soldered

Environmental Data

Temperature range -55°C to +155°C

RoHS compliant

Material And Plating

Connector parts	Material	Plating
Centre contact	Brass	Gold plating(Nickel underplated)
Body	Phosphor Bronze	Gold plating(Nickel underplated)
Insulator	PTFE	

Suitable Cables

RSR-141, RSF-141, RSF-141-FEP, UT 141, RG 402/U, RTK- FS 141, RTK- Flex 402, BELDEN 1673A

Packing

Single or 100