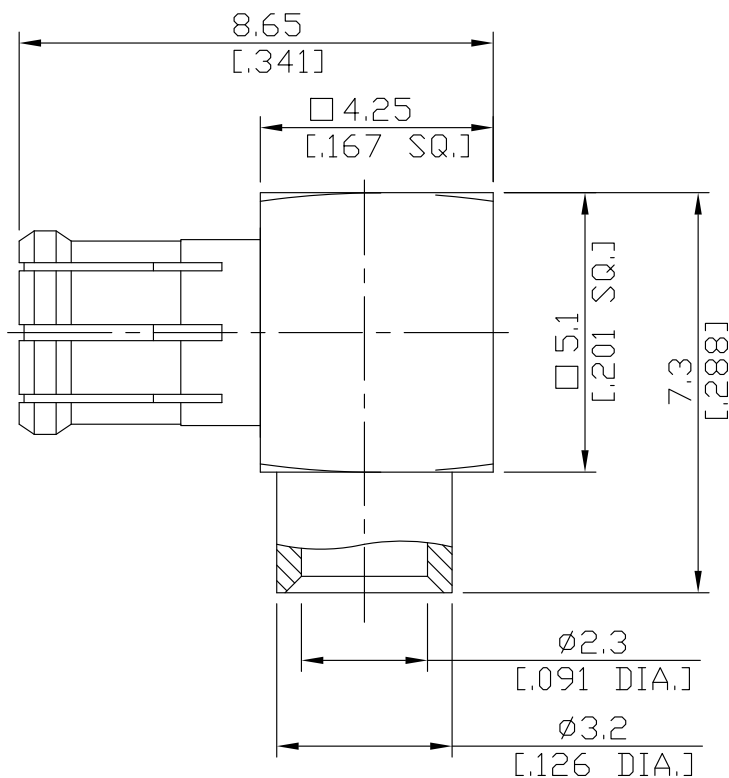


MCX Plug (Male) Straight Connector Solder/Contact Pin Solder Attachment
for .085, .086, RG405; Rosnol RSR-085, RSF-085, EF405 DC-6GHz VSWR1.1

MCX1E59-0085B / H1



All dimensions are in mm [inch]

Tolerances according to DIN ISO 2768-mH

Interface

According to

IEC 61169-36

Electrical Data

Impedance	50 Ω
Frequency	DC to 6 GHz
VSWR (Return Loss)	≤ 1.1 (≥ 26 dB)
Insertion Loss	≤ 0.05 x √F (GHz) dB
Insulation Resistance	≥ 5 GΩ
Center Contact Resistance	≤ 5 mΩ
Outer Contact Resistance	≤ 2.5 mΩ
Test Voltage	750 V rms
Working Voltage	335 V rms

- Limitations are possible due to the used cable type -

Material And Plating

Piece Parts	Material	Plating
Centre contact	Phosphor Bronze	Gold plating, 3 μinch (Non-magnetic nickel-phosphorus underplating, 80 μinch)
Body	Brass	Gold plating, 3 μinch (Non-magnetic nickel-phosphorus underplating, 80 μinch)
Insulator	PTFE	
Gasket	Silicone Rubber	

The facts and figures herein are carefully compiled to the best of our knowledge, but they are intended for general informational purposes only. In the effort to improve our products, we reserve the right to make changes judged to be necessary.

Rev.:
Date: 12/7/2020

Rosnol RF/Microwave Technology Co., Ltd.
www.rosnol.com; info@rosnol.com
Phone: +886-3-463-5095 / Fax: +886-3-463-5952
N-CAGE Code: SFKK0 / ISO9001 Certified

Page

1/2

MCX Plug (Male) Straight Connector Solder/Contact Pin Solder Attachment
for .085, .086, RG405; Rosnol RSR-085, RSF-085, EF405 DC-6GHz VSWR1.1

MCX1E59-0085B / H1

Mechanical Data

Coupling Mechanisms	Screw-Lock
Mating Cycles	≥ 500
Center contact captivation	≥ 10 N
Engagement force	≤25 N
Disengagement force	8 N min. to 20 N max.
Centre Contact	Soldered
Cable Entry	Soldered

Environmental Data

Temperature Range	-55°C to +165°C
Thermal Shock	CECC 22 220, Chapter 4.6.7
Corrosion	CECC 22 220, Chapter 4.6.10
Vibration	CECC 22 220, Chapter 4.6.3
Moisture Resistance	CECC 22 220, Chapter 4.6.6
RoHS	compliant

Suitable Cables

.085, .086, RG405; Rosnol RSR-085, RSF-085, EF405

Weight

N/A

Packing

Single or 100