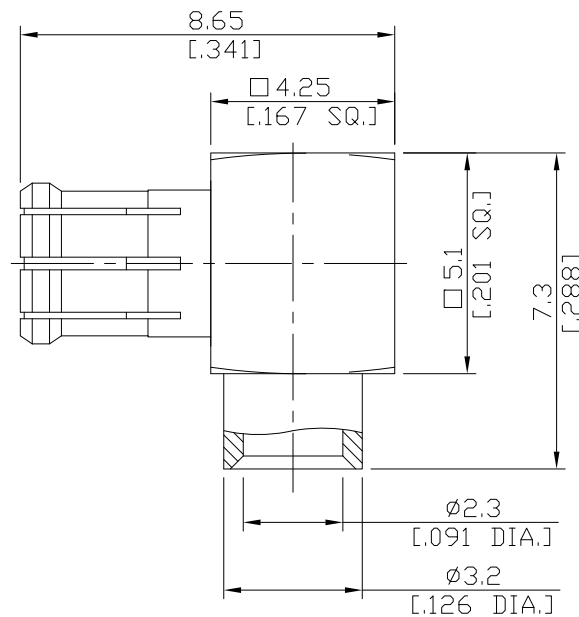


## MCX Right Angle Cable Plug

MCX1E59-0085A/H1



All dimensions are in mm [inch]  
Tolerances according to DIN ISO 2768-mH

### Interface

According to N/A

### Electrical Data

Impedance 50  $\Omega$   
Frequency DC to 6 GHz

- Limitations are possible due to the used cable type -

### Mechanical Data

Coupling mechanisms Snap-lock  
Centre contact Soldered  
Cable entry Soldered

### Environmental Data

Temperature range -55°C to +155°C  
RoHS compliant

### Material And Plating

Connector parts	Material	Plating
Centre contact	Brass	Gold plating(Nickel underplated)
Body	Phosphor Bronze	Gold plating(Nickel underplated)
Insulator	PTFE	

### Suitable Cables

Semi-Rigid .085

### Packing

Single or 100