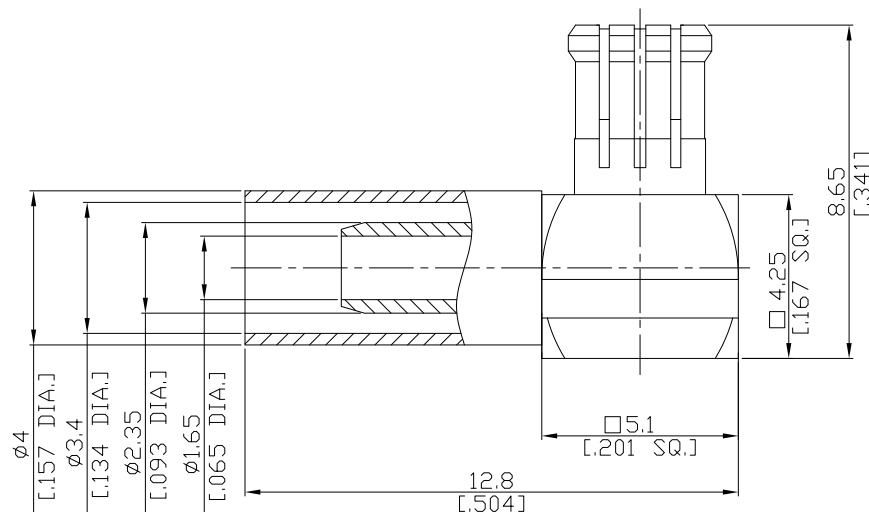




**MCX(Male)
Right Angle Cable Plug**

MCX1C59-D316A/1H



All dimensions are in mm [inch]

Tolerances according to DIN ISO 2768-mH

Interface

According to IEC 60169-36

Electrical Data

Impedance 50 Ω

Frequency DC to 6 GHz

- Limitations are possible due to the used cable type and manufacturing process -

Mechanical Data

Coupling mechanisms Snap-lock

Centre contact Soldered

Cable entry Crimped

Environmental Data

Temperature range -55°C to +155°C

RoHS compliant

Material And Plating

Connector parts	Material	Plating
Centre contact	Brass	Gold plating(Nickel underplated)
Body	Phosphor Bronze/Brass	Gold plating(Nickel underplated)
Insulator	PTFE	
Crimp ferrules	Brass	Gold plating(Nickel underplated)

Suitable Cables

RD-188/U, RD-316/U, RG-316D

Packing

Single or 100