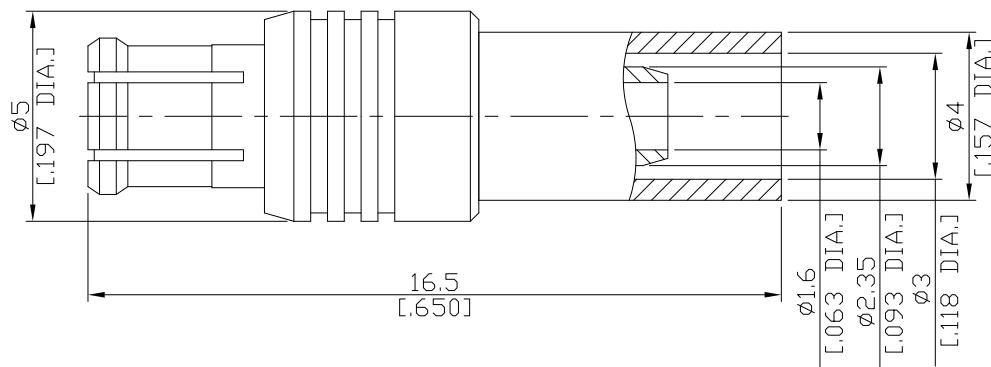




MCX Straight Cable Plug

MCX1C50-G316A/1H



All dimensions are in mm [inch]

Tolerances according to DIN ISO 2768-mH

Interface

According to CECC 22 220; IEC 60169-36

Electrical Data

Impedance 50 Ω
Frequency DC to 6 GHz
VSWR (Return Loss) ≤ 1.22 (≥ 20 dB)
Insertion Loss ≤ 0.05 dB

- Limitations are possible due to the used cable type and manufacturing process -

Mechanical Data

Coupling mechanisms Snap-lock
Centre contact Soldered
Cable entry Crimped

Environmental Data

Temperature range -55°C to +155°C
RoHS compliant

Material And Plating

Connector parts	Material	Plating
Centre contact	Brass	Gold plating(Nickel underplated)
Body	Phosphor Bronze	Gold plating(Nickel underplated)
Insulator	PTFE	
Crimp ferrules	Brass	Gold plating(Nickel underplated)

Suitable Cables

RG 316/U, RG-316-d, RG 174 A/U, RG 188, G 02232, BELDEN 7805

Packing

Single or 100