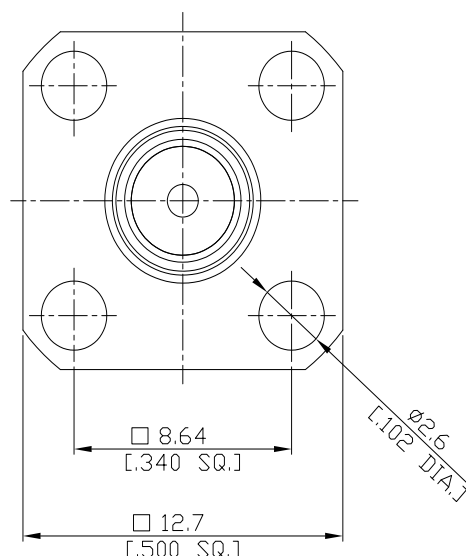
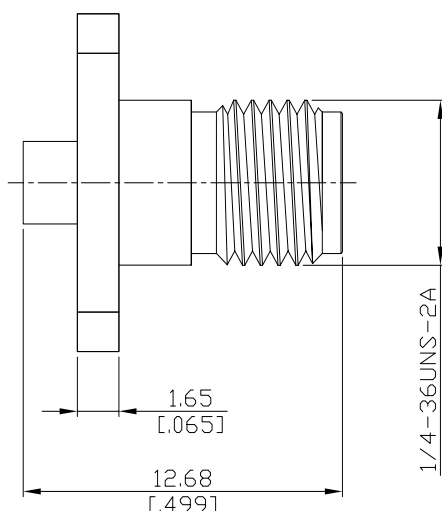


2.92mm Straight 4-Hole Panel Cable Jack

K2EBF50-0085A/9X



All dimensions are in mm [inch]

Tolerances according to DIN ISO 2768-mH

Interface

According to IEC 61169-35; MIL-C-39012; MIL-STD-348A/323

Electrical Data

Impedance 50 Ω
Frequency DC to 40 GHz
VSWR (Return Loss) ≤ 1.25 (≥ 19.08 dB)
Insertion Loss ≤ 0.05 x √F (GHz) dB

- Digressions are possible due to the used cable type and manufacturing process -

Mechanical Data

Coupling mechanisms Screw-lock
Centre contact Plug-in
Cable entry Soldered

Environmental Data

Temperature range -55°C to +165°C
RoHS compliant

Material And Plating

Connector parts	Material	Plating
Centre contact	Beryllium Copper	Gold plating(Nickel underplated)
Body	Stainless Steel	Passivated
Insulator	PEI	
Barrel (cable entry)	Brass	Gold plating(Nickel underplated)

Suitable Cables

SR085, SF085, MF085, EF405

Related Document

Mounting Dimension MD10

Packing

Single or 100