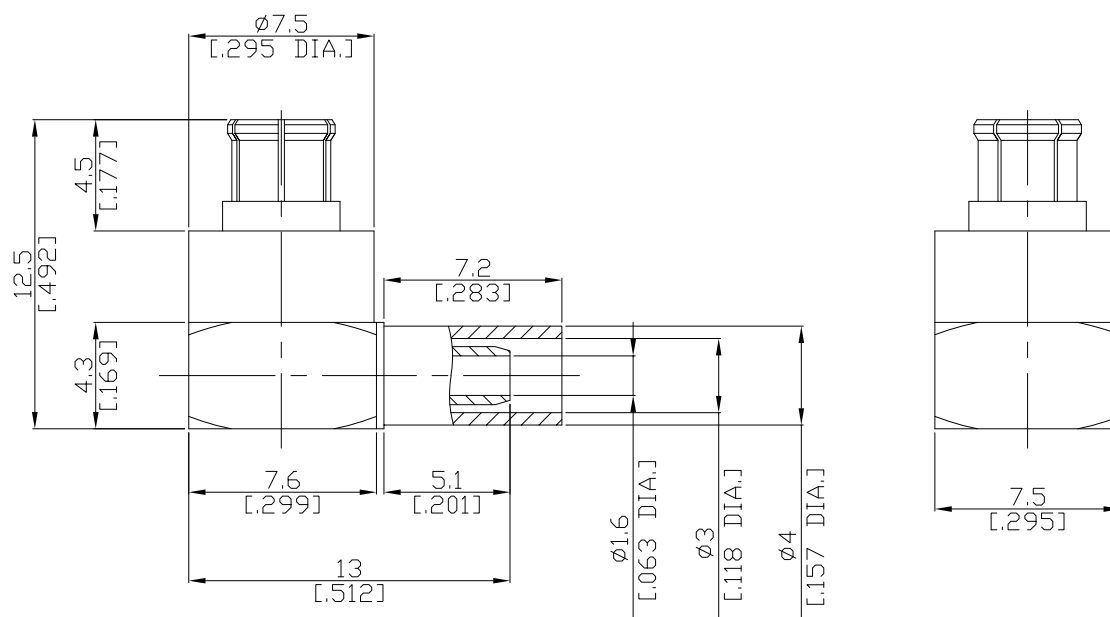


High Power (HP) SMP (Female) Right Angle
Cable Jack, DC-10 GHz, VSWR ≤1.20

HPSMP2C59-G316A/94



All dimensions are in mm [inch]

Tolerances according to DIN ISO 2768-mH

Interface

According to N/A

Electrical Data

Impedance 50 Ω
Frequency DC to 10 GHz
VSWR (Return Loss) DC to 6 GHz: ≤ 1.20 (≥ 20.83 dB)
Insertion Loss ≤ 0.03 × √F (GHz) dB
Test voltage 1000 V rms (@ sea level)
Working voltage 480 V rms (@ sea level)
Power handling (at 2.2 GHz) ≤ 200 W (@ sea level; 20 °C; VSWR: 1.0)
PIM level ≥ -155 dBc

- Limitations are possible due to the used cable type and manufacturing process -

Mechanical Data

Coupling mechanisms Snap-lock
Centre contact Soldered
Cable entry Crimped

Environmental Data

Temperature range -65°C to +165°C
RoHS compliant

Material And Plating

Connector parts	Material	Plating
Centre contact	Beryllium Copper	Gold plating (Nickel underplated)
Body	Brass	Copper-Tin-Zinc Alloy
Insulator	PTFE	
Crimp ferrules	Brass	Copper-Tin-Zinc Alloy

High Power (HP) SMP (Female) Right Angle
Cable Jack, DC-10 GHz, VSWR ≤ 1.20

HPSMP2C59-G316A/94

Suitable Cables

RG 316/U, RG 174 A/U, RG 188, LMR 100A, RNL-100

Packing

Single or 100

Crimp Dimensions [HEX]

Crimp ferrule

3.25mm [.128 inch]