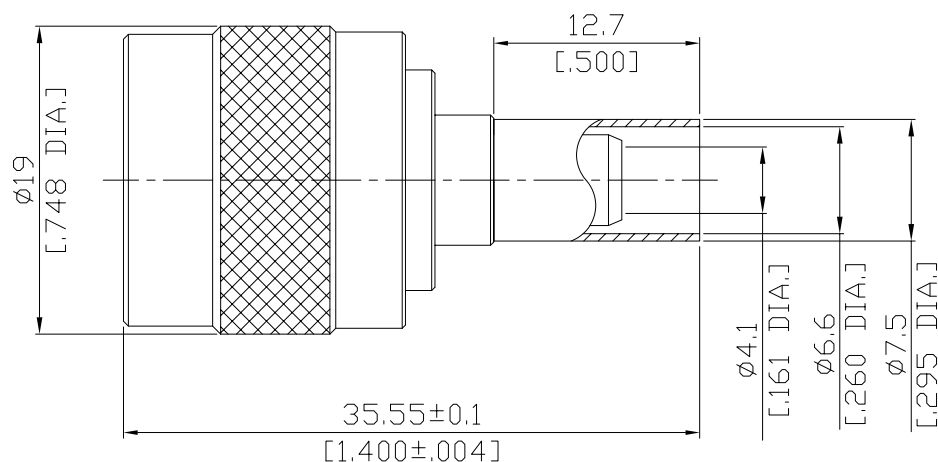


**C (Male) Straight
Cable Crimp Plug**

C1C50-R240A/133



All dimensions are in mm [inch]

Tolerances according to DIN ISO 2768-mH

Interface

According to

Electrical Data

Impedance	50 Ω
Frequency	DC to 3 GHz
VSWR (Return Loss)	≤ 1.30 (≥ 17.69 dB)

- Limitations are possible due to the used cable type and manufacturing process -

Mechanical Data

Coupling mechanisms	Screw-lock
Centre contact	Soldered
Cable entry	Crimped

Environmental Data

Temperature range	-65°C to +165°C
RoHS	compliant

Material And Plating

Connector parts	Material	Plating
Centre contact	Brass	Gold plating(Nickel underplated)
Body	Brass	Nickel
Insulator	PTFE	
Gasket	Silicone Rubber	
Coupling nut	Brass	Nickel
Crimp ferrules	Brass	Nickel

Suitable Cables

LMR 240, RNL-240

Packing

Single or 100

Crimp Dimensions [HEX]

Crimp ferrule	6.48mm [.255 inch]
---------------	--------------------