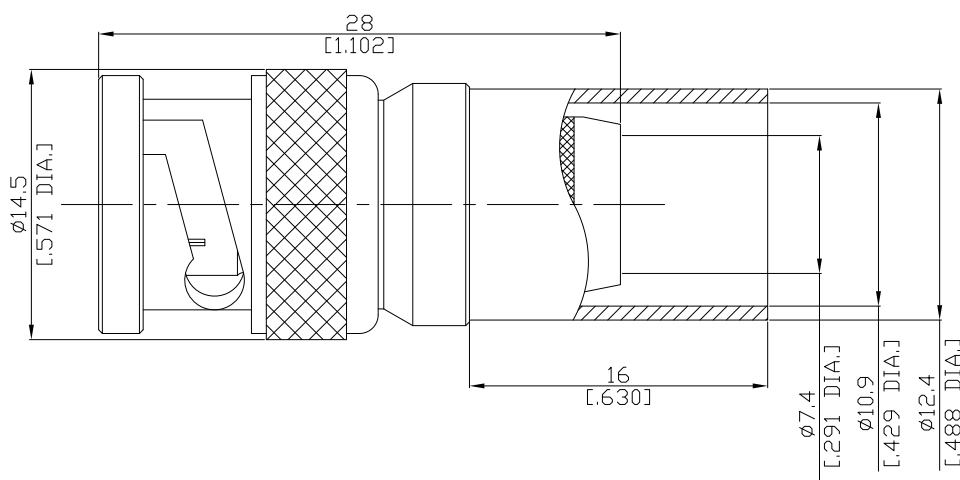


BNC(Male) Straight Cable Plug

BNC1C50-R400A/144



All dimensions are in mm [inch]

Tolerances according to DIN ISO 2768-mH

**Interface**

According to IEC 60169-8; MIL-STD-348A/301

**Electrical Data**

Impedance 50  $\Omega$   
Frequency DC to 4 GHz  
VSWR (Return Loss)  $\leq 1.30$  ( $\geq 17.69$  dB)

- Digressions are possible due to the used cable type and manufacturing process-

**Mechanical Data**

Coupling mechanisms Bayonet-lock  
Centre contact Soldered or Crimped  
Cable entry Crimped

**Environmental Data**

Temperature range -65°C to +165°C  
RoHS compliant

**Material And Plating**

Connector parts	Material	Plating
Centre contact	Brass	Gold plating(Nickel underplated)
Body	Brass	Copper-Tin-Zinc Alloy
Insulator	PTFE	
Gasket	Silicone Rubber	
Coupling nut	Brass	Copper-Tin-Zinc Alloy
Crimp ferrules	Brass	Copper-Tin-Zinc Alloy

**Suitable Cables**

LMR 400, Belden 7810A, Belden 8214, Belden 9913

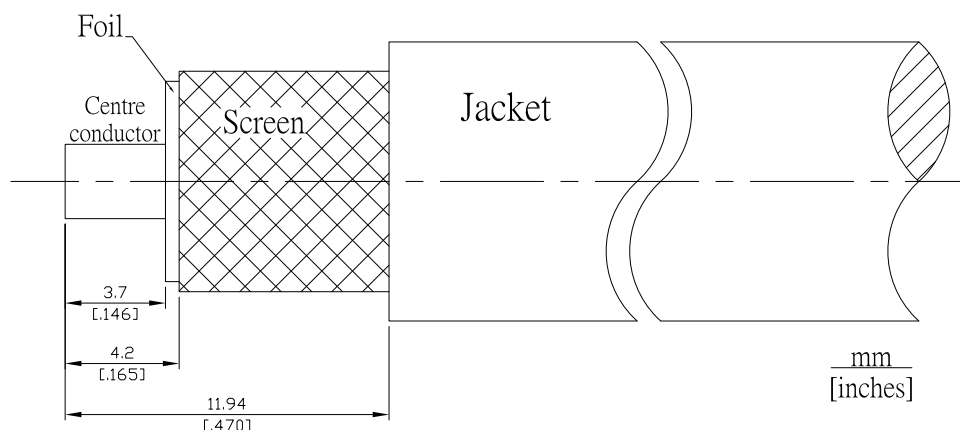
**Packing**

Single or 100

BNC(Male) Straight Cable Plug

BNC1C50-R400A/144

Recommended Cable Stripping Dimensions



Crimp Dimensions [HEX]

Crimp ferrule	10.9 mm [.429 inch]
Center Contact	3 mm [.118 inch]