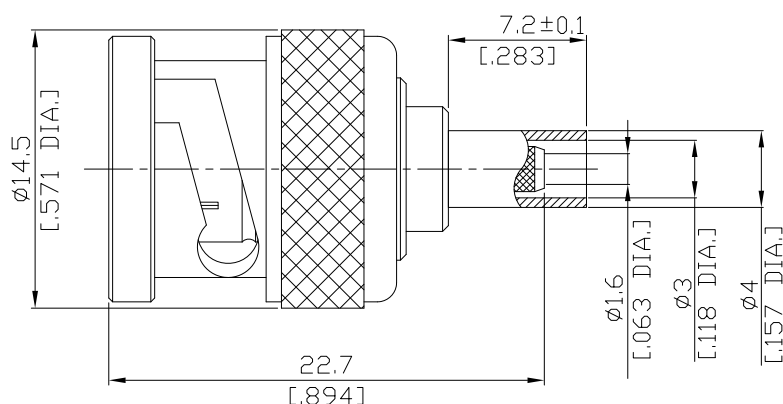


BNC(Male) Straight Cable Plug

BNC1C50-G316A/144



All dimensions are in mm [inch]

Tolerances according to DIN ISO 2768-mH

Interface

According to IEC 60169-8; MIL-STD-348A/301

Electrical Data

Impedance: 50 Ω
 Frequency: DC to 4 GHz
 VSWR (Return Loss): ≤ 1.20 (≥ 20.8 dB)
 Insertion Loss: $\leq 0.05 \times \sqrt{F}$ (GHz) dB

- Limitations are possible due to the used cable type and manufacturing method -

Mechanical Data

Coupling mechanisms: Bayonet-lock
 Centre contact: Crimped or Soldered
 Cable entry: Crimped

Environmental Data

Temperature range: -65°C to +165°C
 RoHS: compliant

Material And Plating

Connector parts	Material	Plating
Centre contact	Brass	Gold plating(Nickel underplated)
Body	Brass	Copper-Tin-Zinc Alloy
Insulator	PTFE	
Gasket	Silicone Rubber	
Coupling nut	Brass	Copper-Tin-Zinc Alloy
Crimp ferrules	Brass	Copper-Tin-Zinc Alloy

Suitable Cables

RG-174, RG-188A, RG-316, BELDEN 7805

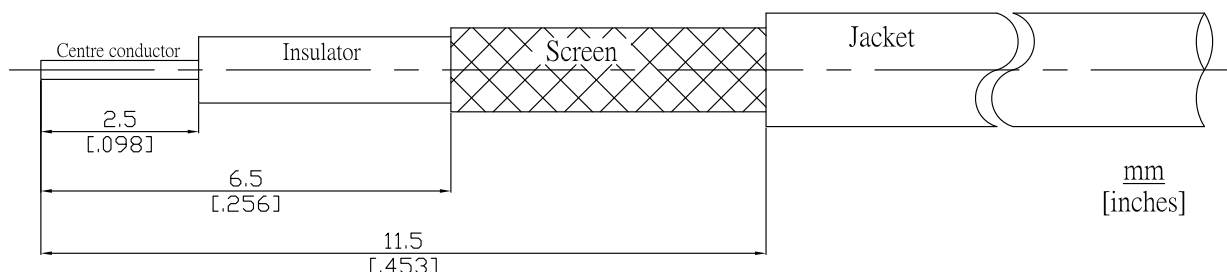
Packing

Single or 100

BNC(Male) Straight Cable Plug

BNC1C50-G316A/144

Recommended Cable Stripping Dimensions



Crimp Dimensions

Crimp ferrule
Center Contact

3.25 mm [.128 inch] HEX
0.7 mm [.028 inch] SQ