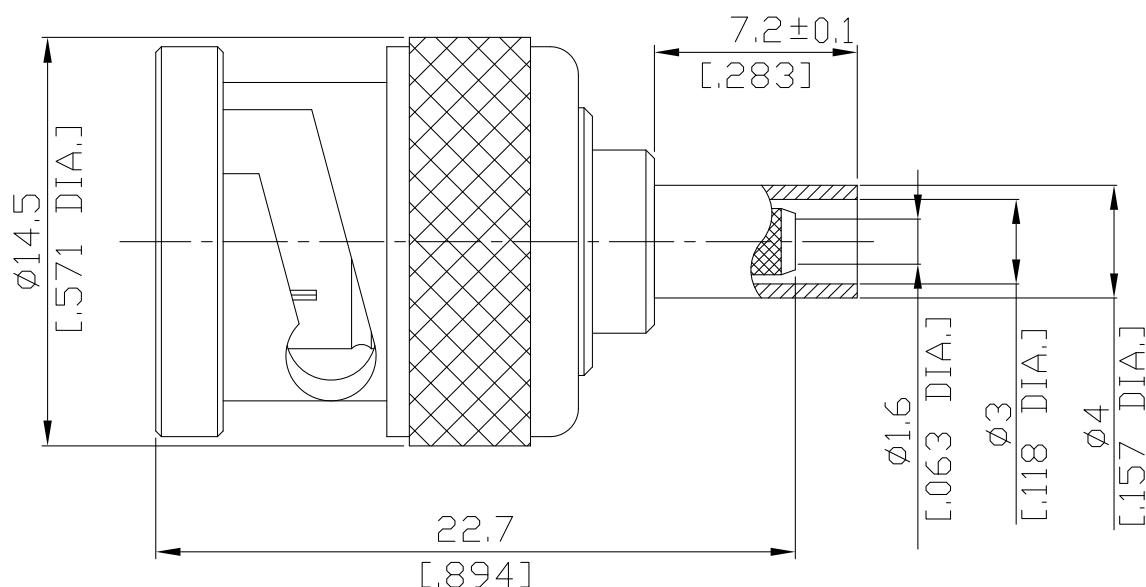


BNC Plug (Male) Connector Contact Pin: Crimped, Cable Entry: Crimped Attachment
for RG174, RG188A, RG316, LMR-100, RNL-100, BELDEN 7805 DC-4GHz VSWR1.20

BNC1C50-G316A / 133



All dimensions are in mm [inch]

Tolerances according to DIN ISO 2768-mH

Interface

According to

IEC 60169-8

MIL-STD-348B/301

Electrical Data

Impedance	50 Ω
Frequency	DC to 4 GHz
VSWR (Return Loss)	≤ 1.20 (≥ 20.83 dB)
Insertion Loss	$\leq 0.05 \times \sqrt{F}$ (GHz) dB
Insulation Resistance	≥ 5 G Ω
Center Contact Resistance	≤ 1.5 m Ω
Outer Contact Resistance	≤ 1.0 m Ω
Test Voltage	1500 V rms
Working Voltage	400 V rms
Power handling (at 20 °C, sea level)	≤ 80 W @ 2 GHz

- Limitations are possible due to the used cable type -

Material And Plating

Piece Parts	Material	Plating
Centre contact	Brass	Gold plating, 3 μ inch (Non-magnetic nickel-phosphorus underplating, 80 μ inch)
Body	Brass	Nickel
Insulator	PTFE	
Gasket	Silicone Rubber	
Coupling nut	Brass	Nickel
Ferrule	Brass	Nickel

The facts and figures herein are carefully compiled to the best of our knowledge, but they are intended for general informational purposes only. In the effort to improve our products, we reserve the right to make changes judged to be necessary.

Rev.:
Date:
12/7/2020

Rosnol RF/Microwave Technology Co., Ltd.
www.rosnol.com; info@rosnol.com
Phone: +886-3-463-5095 / Fax: +886-3-463-5952
N-CAGE Code: SFKK0 / ISO9001 Certified

Page
1/3

BNC Plug (Male) Connector Contact Pin: Crimped, Cable Entry: Crimped Attachment for RG174, RG188A, RG316, LMR-100, RNL-100, BELDEN 7805 DC-4GHz VSWR1.20

BNC1C50-G316A / 133

Mechanical Data

Coupling Mechanisms	Bayonet-Lock
Mating Cycles	≥ 500
Center Contact Captivation: axial	≥ 15 N
Centre Contact	Crimped
Cable Entry	Crimped

Environmental Data

Temperature Range	-65°C to +165°C
Thermal Shock	MIL-STD-202, Method 107, Condition B
Corrosion	MIL-STD-202, Method 101, Condition B
Vibration	MIL-STD-202, Method 204, Condition B
Shock	MIL-STD-202, Method 213, Condition G
Moisture Resistance	MIL-STD-202, Method 106
RoHS	Compliant

Suitable Cables

RG174, RG188A, RG316, LMR-100, RNL-100, BELDEN 7805

Weight

N/A

Packing

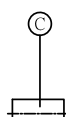
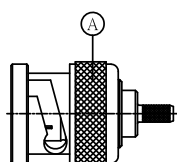
Single or 100

N Plug (Male) Connector Crimp/Contact Pin Solder or Crimp Attachment
for RG214, RG9, RG225, RG393 DC-6GHz VSWR1.22

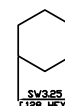
BNC1C50-G316A / 133

Connector Type:	BNC1C50-G316A/133	Inner Conductor Contact:	Crimped
Suitable Cable:	RG316	Outer Conductor Contact:	Crimped

Parts List of Connector:



Crimped Ferrule
HEX. Crimp Size:



Crimped Contact Pin
SQ. Crimp Size:



Assembly Steps:

Picture	Process	Attention/Check	Tools Required
	Push ferrule "C" over the cable. Prepare the cable according to the diagram.	Do not damage center contact, dielectric and braid.	Blade Scissor
	Push contact "B" over inner conductor of cable up to cable dielectric and crimp.	Contact "B" flush to dielectric.	Crimp tool: CT-L3 Crimp insert: CH-L33T1A
	Splay out braid and insert cable in connector body "A".	Ensure that braid lies above crimp neck.	
	Slide ferrule "A" over braid and crimp.	Crimp as close to connector body "C" as possible.	Crimp tool: CT-L3 Crimp insert: CH-L33T1A