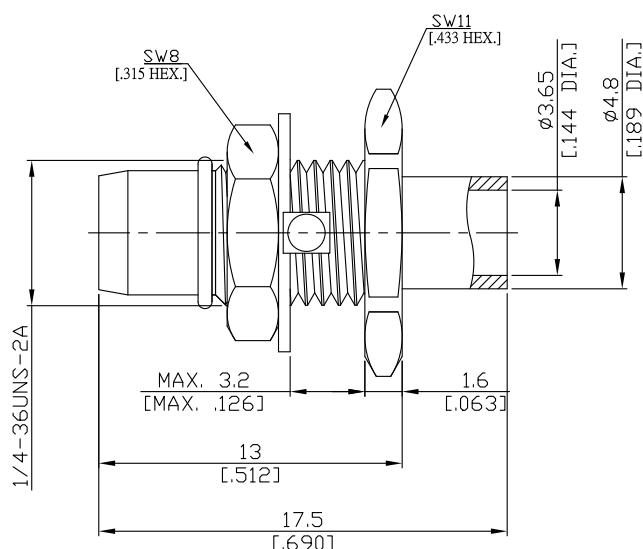
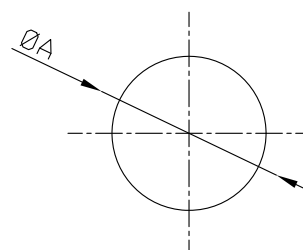


BMA Plug (Male) Bulkhead Mount Slide-On Connector Solder/Non-Solder Contact Attachment,
for .141 Cable,DC-22GHz VSWR1.2

BMA1EA50-0141A / 93



Mounting Dimension



	mm		inch	
	Max.	Min.	Max.	Min.
A	6.65	6.6	.262	.26

All dimensions are in mm [inch]

Tolerances according to DIN ISO 2768-mH

Interface

According to

MIL-STD-348/321;IEC 61169-33

Electrical Data

Impedance	50 Ω
Frequency	DC to 22 GHz
VSWR (Return Loss)	≤ 1.20 (≥ 20.83 dB)
Insertion Loss	≤ 0.04 x √F (GHz) dB
Insulation Resistance	≥ 5 GΩ
Center Contact Resistance	≤ 5.0 mΩ
Outer Contact Resistance	≤ 2.5 mΩ
Test Voltage (at sea level)	1000 V rms
Working Voltage (at sea level)	400 V rms
RF Leakage	≥ 85 dB up to 1 GHz

-VSWR in application depends decisive on cable assembly process-

Material And Plating

Piece Parts	Material	Plating
Centre contact	Beryllium Copper	Gold plating, 3 μinch (Non-magnetic nickel-phosphorus underplating, 100 μinch)
Body	Brass	Nickel
Gasket	Silicone Rubber	
Barrel	Stainless Steel	Passivated
Fastening nut	Brass	Nickel
Washer	Brass	Nickel

The facts and figures herein are carefully compiled to the best of our knowledge, but they are intended for general informational purposes only. In the effort to improve our products, we reserve the right to make changes judged to be necessary.

Rev.:
Date:
NOV/8/2024

Rosnol RF/Microwave Technology Co., Ltd.
www.rosnol.com; info@rosnol.com
Phone: +886-3-463-5095 / Fax: +886-3-463-5952
N-CAGE Code: SFKK0 / ISO9001 Certified

Page

1/2

BMA Plug (Male) Bulkhead Mount Slide-On Connector Solder/Non-Solder Contact Attachment,
for .141 Cable,DC-22GHz VSWR1.2

BMA1EA50-0141A / 93

Mechanical Data

Coupling mechanisms	Slide-On
Mating Cycles	≥ 1000
Center Contact Captivation	≥ 27 N
Engagement force	≤ 13.5 N
Disengagement Force	≥ 2 N
Cable entry	Soldered

Environmental Data

Temperature Range	-65°C to +125°C
Thermal Shock	MIL-STD-202, Meth. 107, Cond. B
Corrosion Resistance	MIL-STD-202, Meth. 101, Cond. B
Vibration	MIL-STD-202, Meth. 204, Cond. D
Shock	MIL-STD-202, Meth. 213, Cond. I
Moisture Resistance	MIL-STD-202, Meth. 106
RoHS	compliant

Suitable Cables

RSR-141, RSF-141, RSF-141-FEP, RSF-141-PVC, RG 402, BELDEN 1673A, BELDEN 1673J

Packing

Single or 100