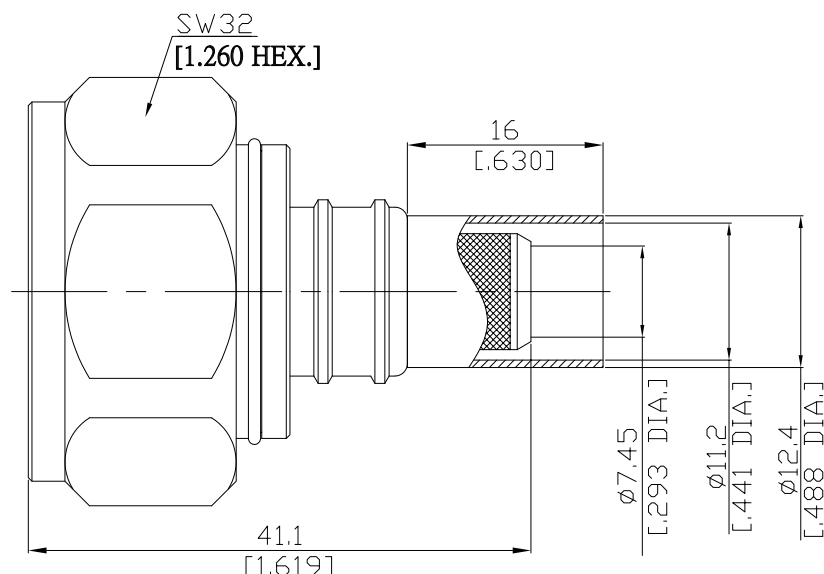


7/16 (Male) Straight Cable Plug

716-1C50-G214A/144



All dimensions are in mm [inch]

Tolerances according to DIN ISO 2768-mH

**Interface**

According to IEC 61169-4

**Electrical Data**

Impedance 50 Ω  
Frequency DC to 6 GHz

- Limitations are possible due to the used cable type and manufacturing method -

**Mechanical Data**

Coupling mechanisms Screw-lock  
Centre contact Soldered or Crimped  
Cable entry Crimp

**Environmental Data**

Temperature range -65°C to +165°C  
RoHS compliant

**Material And Plating**

Connector parts	Material	Plating
Centre contact	Brass	Gold plating(Nickel underplated)
Body	Brass	Copper-Tin-Zinc Alloy
Insulator	PTFE	
Gasket	Silicone Rubber	
Coupling nut	Brass	Copper-Tin-Zinc Alloy

**Suitable Cables**

RG-393, RG-214, RG-225, RG-9

**Packing**

Single or 100

**Crimp Dimensions [HEX]**

Crimp ferrule 10.9mm [.429 inch]  
Centre contact 2.54mm [.100 inch]