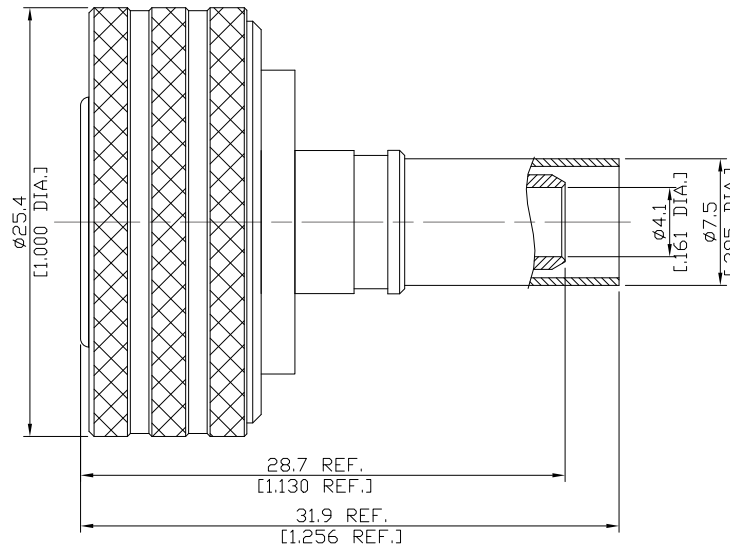


4.3-10 Push-Pull Plug (Male) Connector Crimp / Contact Pin Soldered or Crimped Attachment for LMR-240, DC-6 GHz, VSWR 1.3

**4310Q1C50-R240A / 144**



All dimensions are in mm [inch]

Tolerances according to DIN ISO 2768-mH

**Interface**

According to IEC 61169-54

**Electrical Data**

Impedance	50 Ω
Frequency	DC to 6 GHz
VSWR (Return Loss)	≤ 1.30 (≥ 17,69 dB)
Insertion Loss	≤ 0.05 x √F (GHz) dB
Insulation Resistance	≥ 5 GΩ
Center Contact Resistance	≤ 1 mΩ
Outer Contact Resistance	≤ 1 mΩ
Test Voltage	2500 V rms
Working Voltage	500 V rms
Power handling (at 20 °C, sea level)	500 W @ 2 GHz

-VSWR in application depends decisive on cable assembly process-

**Material And Plating**

Piece Parts	Material	Plating
Centre contact	Brass	Gold plating (Non-magnetic nickel-phosphorus underplating)
Body	Brass	Copper-Tin-Zinc Alloy
Insulator	PTFE	
Gasket	Silicone Rubber	
Coupling nut	Brass	Copper-Tin-Zinc Alloy
Ferrule	Brass	Copper-Tin-Zinc Alloy

4.3-10 Push-Pull Plug (Male) Connector Crimp / Contact Pin Soldered or Crimped  
Attachment for LMR-240, DC-6 GHz, VSWR 1.3

**4310Q1C50-R240A / 144**

**Mechanical Data**

Coupling Mechanisms	Quick-Lock
Mating Cycles	≥ 100
Recommended Torque	N/A
Centre Contact	Soldered or Crimped
Cable Entry	Crimped

**Environmental Data**

Temperature Range	-65°C to +165°C
Thermal Shock	IEC 61169-1 9.4.4
Corrosion	ISO 21207 method B
Vibration	IEC 61169-1 9.3.3 and IEC 60068-2-64
Shock	IEC 61169-1 9.3.14
RoHS	compliant

**Suitable Cables**

LMR240, RNL240

**Packing**

Single or 100