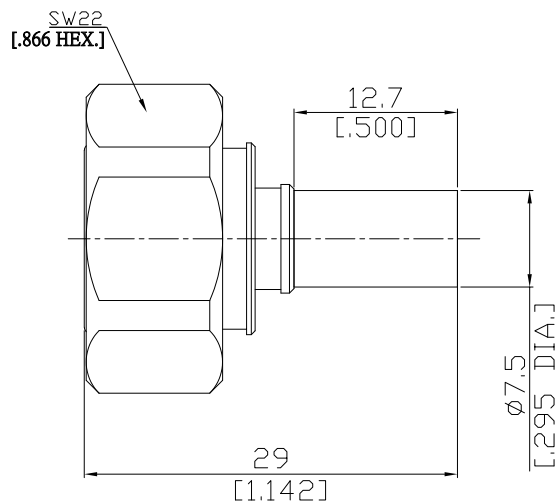


# 4.3-10(Male) Quick-Connect Straight Cable Plug

4310Q-1C50-R240A/944



All dimensions are in mm [inch]

Tolerances according to DIN ISO 2768-mH

## Interface

According to IEC 61169-54

## Electrical Data

Impedance 50 Ω  
Frequency DC to 6 GHz  
VSWR (Return loss) ≤ 1.30 (≥ 17.69 dB)

- Limitations are possible due to the used cable type and manufacturing process -

## Mechanical Data

Coupling mechanisms Snap-on  
Centre contact Soldered or Crimped  
Cable entry Crimped

## Environmental Data

Temperature range -65°C to +165°C  
RoHS compliant  
IP rating IP68

## Material And Plating

Connector parts	Material	Plating
Centre contact	Beryllium Copper	Gold plating (Nickel underplated)
Body	Brass	Copper-Tin-Zinc Alloy
Insulator	PTFE	
Gasket	Silicone Rubber	
Coupling nut	Brass	Copper-Tin-Zinc Alloy
Crimp ferrules	Brass	Copper-Tin-Zinc Alloy

## Suitable Cables

LMR 240, BELDEN 7808A, BELDEN 9258, BELDEN H155, RNL-240

## Packing

Single or 100