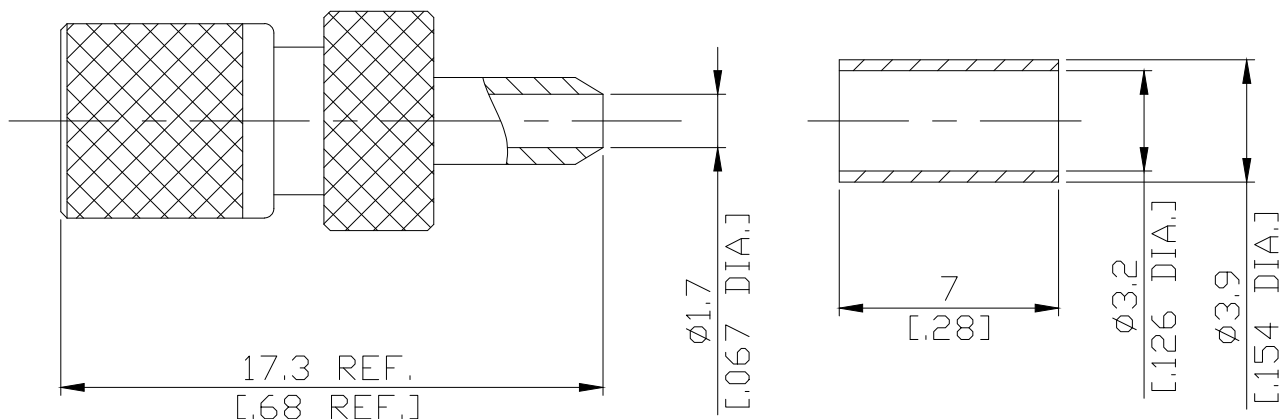


10-32 Plug (Male) Connector, Cable Entry: Crimp Center Conductor, Solder Attachment for RG174, RG188, RG316, DC 4GHz, VSWR 1.3

1032-1C50-G316A / 133



All dimensions are in mm [inch]

Tolerances according to DIN ISO 2768-mH

Interface

According to N/A

Electrical Data

Impedance	50 Ω
Frequency	DC to 4 GHz
VSWR (Return Loss)	≤ 1.3 (≥ 17.7 dB)
Operating voltage (AC)	250 V rms
Center contact resistance	≤ 3 mΩ
Outer contact resistance	≤ 3 mΩ
Test Voltage (at sea level)	1000 V rms
Working Voltage (at sea level)	400 V rms

Material And Plating

Piece Parts	Material	Plating
Centre Contact	Brass	Gold plating, 3 μinch (Non-magnetic nickel-phosphorus underplating, 80 μinch)
Body	Brass	Nickel
Insulator	PTFE	
Coupling Nut	Brass	Nickel
Crimp Ferrule	Brass	Nickel

10-32 Plug (Male) Connector, Cable Entry: Crimp Center Conductor, Solder Attachment for RG174, RG188, RG316, DC 4GHz, VSWR 1.3

1032-1C50-G316A / 133

Mechanical Data

Coupling Mechanisms	Screw-Lock
Mating Cycles	≥ 500
Centre Contact	Soldered
Cable Entry	Crimp

Environmental Data

Temperature Range	-65°C to +165°C
Thermal shock	MIL-STD-202, Method 107, Condition B
Corrosion	MIL-STD-202, Method 101, Condition B
Vibration	MIL-STD-202, Method 204, Condition B
Shock	MIL-STD-202, Method 213, Condition G
Moisture Resistance	MIL-STD-202, Method 106
RoHS	compliant

Suitable Cable

RG 316/U, RG 174 A/U, RG188, G 022232, BELDEN 7805

Packing

Single or 100