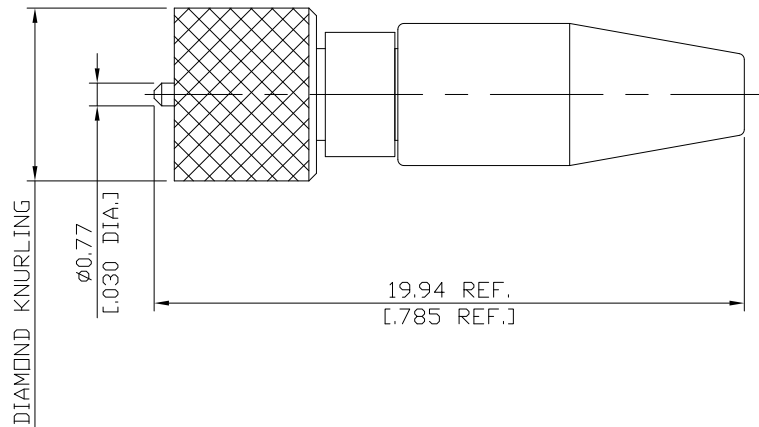


10-32 Plug (Male) Connector, Cable Entry: Crimp
Center Conductor: Solder Attachment for RG178, RG196 DC-2GHz

1032-1C50-G178B / 111



All dimensions are in mm [inch]
Tolerances according to DIN ISO 2768-mH

Interface

According to N/A

Electrical Data

Impedance 50 Ω
Frequency DC to 2 GHz

Material And Plating

Piece Parts	Material	Plating
Centre Contact	Brass	Gold plating, 3 μinch (Non-magnetic nickel-phosphorus underplating, 80 μinch)
Body	Brass	Gold plating, 3 μinch (Non-magnetic nickel-phosphorus underplating, 80 μinch)
Insulator	PTFE	
Coupling Nut	Brass	Gold plating, 3 μinch (Non-magnetic nickel-phosphorus underplating, 80 μinch)
Clamp Ring	Brass	Gold plating, 3 μinch (Non-magnetic nickel-phosphorus underplating, 80 μinch)
Ferrule	Brass	Gold plating, 3 μinch (Non-magnetic nickel-phosphorus underplating, 80 μinch)
Boot	Silicone Rubber	

Mechanical Data

Coupling Mechanisms Screw-Lock
Mating Cycles ≥ 500
Centre Contact Soldered
Cable Entry Crimp

Environmental Data

Temperature Range -55°C to +155°C
RoHS compliant

Packing

Single or 100

Weight

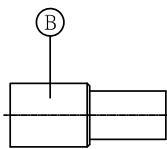
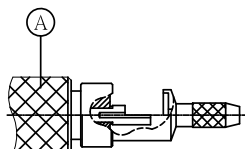
N/A

10-32 Plug (Male) Connector, Cable Entry: Crimp
Center Conductor: Solder Attachment for RG178, RG196 DC-2GHz

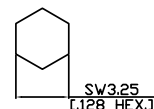
1032-1C50-G178B / 111

Connector Type:	1032-1C50-G178B/111 1032-2C50-G178B/H1	Inner Conductor Contact:	Soldered
Suitable Cable:	RG178, RG196	Outer Conductor Contact:	Crimped

Parts List of Connector:



Crimped Ferrule
HEX. Crimp Size:



Assembly Steps:

Picture	Process	Attention/Check	Tools Required
	Push ferrule "B" over the cable. Prepare the cable according to the diagram.	Do not damage center contact, dielectric and braid.	Blade Scissor
	Splay out braid and insert cable in outer conductor body "A" until it to stop. Solder center conductor according to the diagram.	Ensure that braid lies above crimp neck.	Solder Iron Solder Wire
	Slide ferrule "B" over braid and crimp.	Crimp as close to nut "B" as possible. Do not damage nut "B" and center conductor.	Crimp Tool: CT-L3 Crimp Insert: CHL33JA