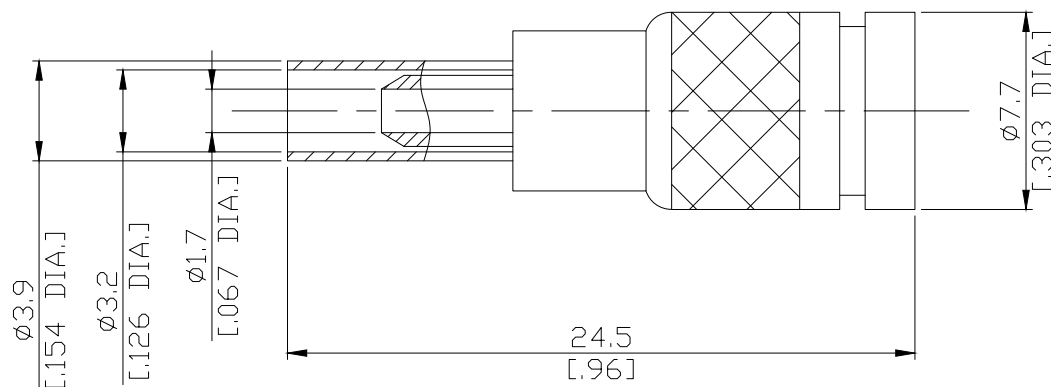


10-32 Plug (Male) Connector, Cable Entry: Crimp Center Conductor, Solder Attachment for RG174, RG188, RG316, DC 4GHz, VSWR 1.3

1032-1C50-G174A / 133



All dimensions are in mm [inch]

Tolerances according to DIN ISO 2768-mH

Interface

According to N/A

Electrical Data

Impedance 50 Ω
Frequency DC to 4 GHz
VSWR (Return Loss) ≤ 1.3 (≥ 17.7 dB)
Operating voltage (AC) 250 V rms

Material And Plating

Piece Parts	Material	Plating
Centre Contact	Brass	Gold plating, 3 μ inch (Non-magnetic nickel-phosphorus underplating, 80 μ inch)
Body	Brass	Nickel
Insulator	PTFE	
Coupling Nut	Brass	Nickel
Crimp Ferrule	Brass	Nickel

Mechanical Data

Coupling Mechanisms Screw-Lock
Mating Cycles ≥ 500
Centre Contact Soldered
Cable Entry Crimp

Environmental Data

Temperature Range -55°C to +125°C
RoHS compliant

Packing

Single or 100