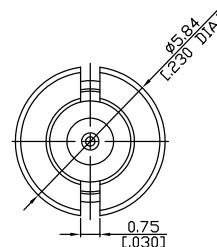
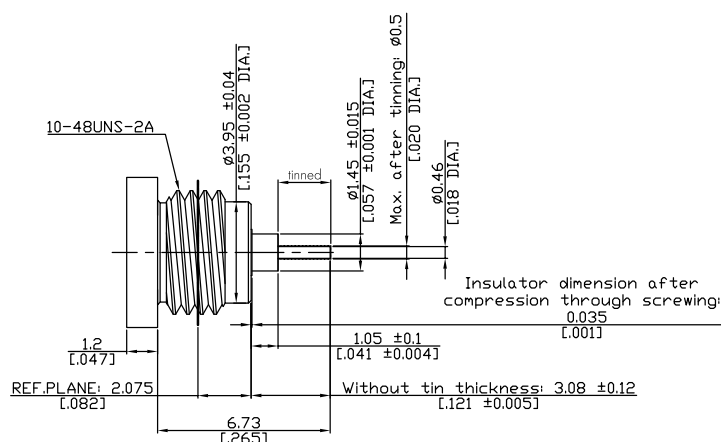
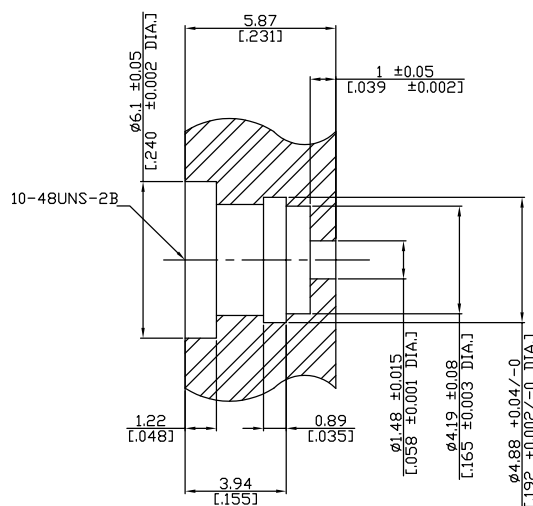


## SMP Plug (Male) Thread-In Receptacle

SMP1FA50-CM0873A/9X



### Recommended Mounting Hole



All dimensions are in mm [inch]

Tolerances according to DIN ISO 2768-mH

## Interface

According to

MIL-STD-348A/326.5 (Catchers Mitt)

## Electrical Data

Impedance

 $50\ \Omega$ 

Frequency

DC to 40 GHz

VSWR

$$\leq 1.05 + 0.008 * F(\text{GHz})$$

Insertion loss

$$\leq 0.1 \times \sqrt{F \text{ (GHz)}} \text{ dB}$$

## Mechanical Data

## Coupling mechanisms

Snap-on

Weight

N/A

## Environmental Data

Temperature range

-65°C to +165°C

RoHS

compliant

## Material And Plating

Piece Parts	Material	Plating
Centre contact	Beryllium Copper	Gold plating(Nickel underplated)
Body	Stainless Steel	Passivated
Insulator	PTFE	

## Packing

Single or 100

The facts and figures herein are carefully compiled to the best of our knowledge, but they are intended for general informational purposes only. In the effort to improve our products, we reserve the right to make changes judged to be necessary.

Rev.:-

Rosinol RF/Microwave Technology

[www.rosnol.com](http://www.rosnol.com); [info@rosnol.com](mailto:info@rosnol.com)

Date:  
19/11/10

Phone: +886-3-463-5095 / Fax: +886-3-463-5952

N-CAGE Code: SFKK0

Page

1/1