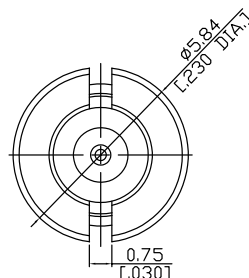
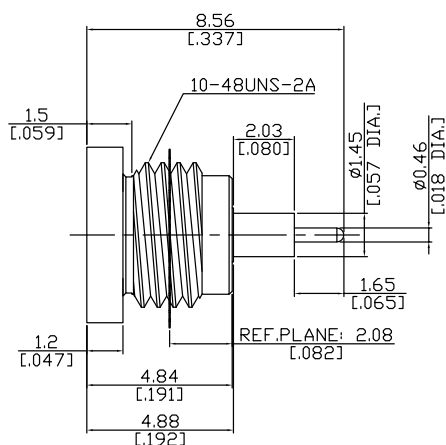
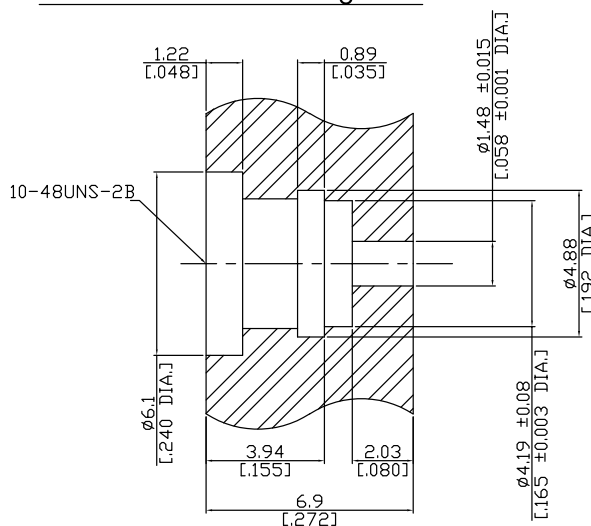


SMP Plug (Male) Thread-In Receptacle

SMP1FA50-CM0856A/9X



Recommended Mounting Hole



All dimensions are in mm [inch]

Tolerances according to DIN ISO 2768-mH

Interface

According to

MIL-STD-348A/326.5 (Catchers Mitt)

Electrical Data

Impedance

50 Ω

Frequency

DC to 40 GHz

VSWR

≤ 1.05 + 0.008 * F (GHz)

Insertion loss

≤ 0.1 x √F (GHz) dB

Mechanical Data

Coupling mechanisms

Snap-on

Weight

N/A

Environmental Data

Temperature range

-65°C to +165°C

RoHS

compliant

Material And Plating

Piece Parts	Material	Plating
Centre contact	Beryllium Copper	Gold plating(Nickel underplated)
Body	Stainless Steel	Passivated
Insulator	PTFE	

Packing

Single or 100

The facts and figures herein are carefully compiled to the best of our knowledge, but they are intended for general informational purposes only. In the effort to improve our products, we reserve the right to make changes judged to be necessary.

Rev.:-

Rosnol RF/Microwave Technology

www.rosnol.com; info@rosnol.com

Date:

Phone: +886-3-463-5095 / Fax: +886-3-463-5952

19/11/10

N-CAGE Code: SFKK0

Page

1/1