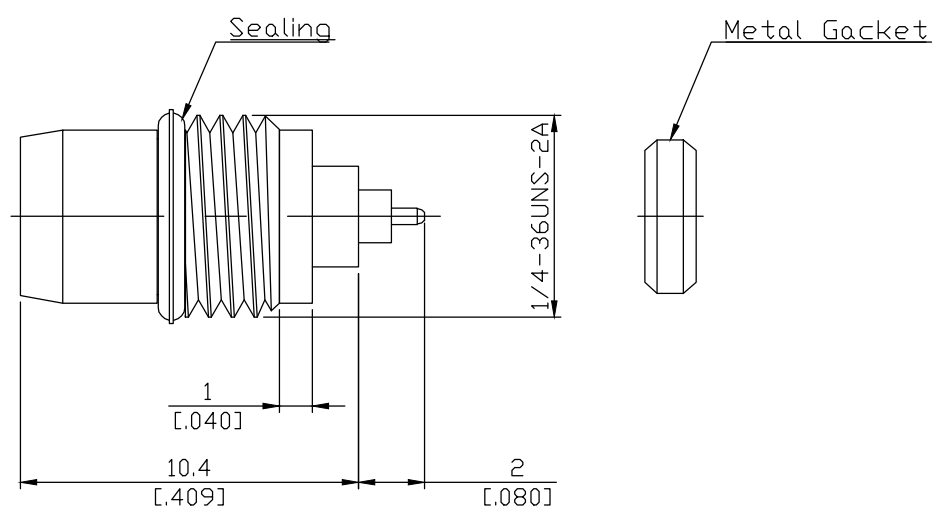
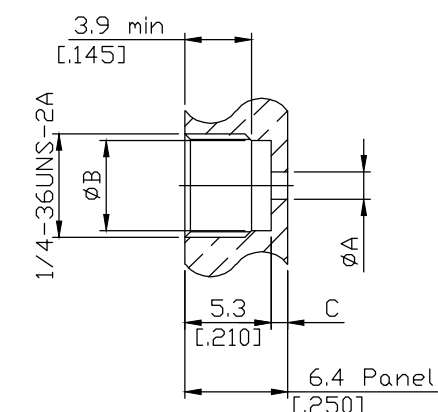


BMA Panel Feedthru Plug Receptacle Hermetically Sealed DC-18 GHz VSWR1.2

BMA1FA50-1240B / 9X



Mounting Dimensions



	mm		inch	
	Max.	Min.	Max.	Min.
A	1.73	1.67	.068	.066
B	5.53	5.47	0.218	0.215
C	1.03	0.97	0.041	0.038

All dimensions are in mm [inch]

Tolerances according to DIN ISO 2768-mH

Interface

Mechanically compatible with

According to

OSP and RPC-SP

IEC 61169-33, MIL-STD-348B/326

Electrical Data

Impedance

50 Ω

Frequency

DC to 18 GHz

VSWR (Return Loss)

≤ 1.20 (≥ 20.8 dB)

Insertion Loss

≤ 0.05 × √F (GHz) dB

Dielectric Withstanding Voltage

1000 Vrms

Center Conduct Resistance

≤ 6 mΩ

Outer Conduct Resistance

≤ 2 mΩ

Material And Plating

Piece Parts (BMA)	Material	Plating
Centre contact	Beryllium Copper	Gold plating, 3 pinch (Non-magnetic nickel-phosphorus underplating, 80 pinch)
Body	Stainless Steel	Passivated
Insulator	PTFE	
Sealing	Silicone Rubber	
Gasket	Stainless Steel	Passivate

BMA Panel Feedthru Plug Receptacle Hermetically Sealed DC-18 GHz VSWR1.2

BMA1FA50-1240B / 9X

Mechanical Data

Coupling Mechanisms	Slide-on
Mating Cycles	≥ 1000
Center Contact Captivation	≥ 27 N
Engagement Force	≤ 13.5 N
Disengagement Force	≥ 2 N

Environmental Data

Temperature Range	-65°C to +125°C
Thermal Shock	MIL-STD-202, Meth. 107, Cond. B
Corrosion Resistance	MIL-STD-202, Meth. 101, Cond. B
Vibration	MIL-STD-202, Meth. 204, Cond. D
Shock	MIL-STD-202, Meth. 213, Cond. I
Moisture Resistance	MIL-STD-202, Meth. 106
RoHS	compliant

Packing

Single or 100