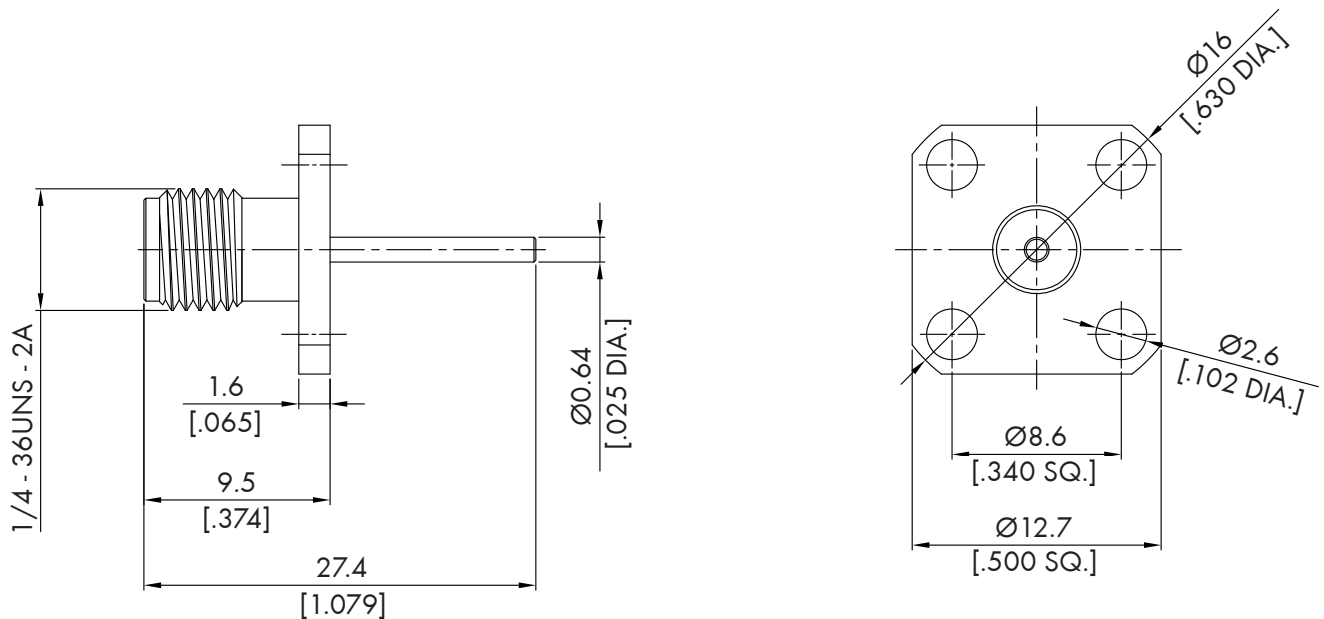




SMA Straight Panel Receptacle Jack  
Coaxial End

SMA2GFA50-2740E/9X



All dimensions are in mm [inch]

Tolerances according to DIN ISO 2768-mH

**Interface**

According to IEC 60169-15; MIL-C-39012; MIL-STD-348A/310

**Electrical Data**

Impedance 50  $\Omega$   
Frequency DC to 27 GHz  
VSWR (Return Loss)  $\leq 1.15$  ( $\geq 23.13$  dB)  
Insertion Loss  $\leq 0.03 \times \sqrt{F}$  (GHz) dB

**Mechanical Data**

Coupling mechanisms Screw-lock  
Weight 0.0031 kg

**Environmental Data**

Temperature range -65°C to +165°C  
RoHS compliant

**Material And Plating**

| Piece Parts    | Material         | Plating                          |
|----------------|------------------|----------------------------------|
| Centre contact | Beryllium Copper | Gold plating(Nickel underplated) |
| Body           | Stainless Steel  | Passivated                       |
| Insulator      | PTFE             |                                  |

**Packing**

Single or 100

**Related Document**

Mounting Dimension MD71