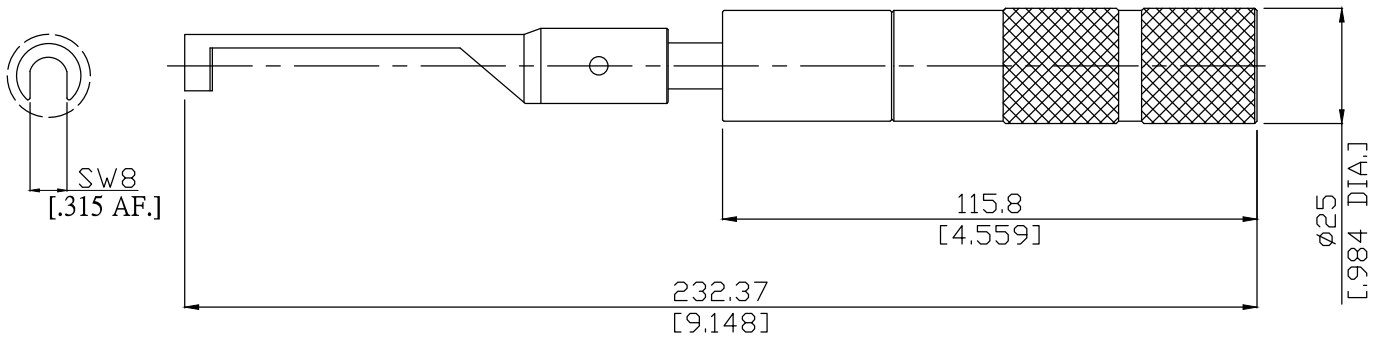


Torque Wrench Screwdriver
 SMA / RPC3.5 / RPC2.92 / RPC2.4 / RPC1.85

RN-RTW-SD-8-8


All dimensions are in mm [inch]
 Tolerances according to DIN ISO 2768-mH

Suitable connector

SMA, RPC3.5, RPC2.92, RPC2.4, RPC1.85

Material And Plating

Tooling parts	Material	Plating
Spanner	Tool Steel	Passivated
Handle	Aluminum	Anodized

Mechanical data

Width across flats	8 mm [5/16inch]
Torque setting	8 lb-in ± 0.5lb-in [0.90 Nm ± 0.06 Nm]

Packing

1 Pcs