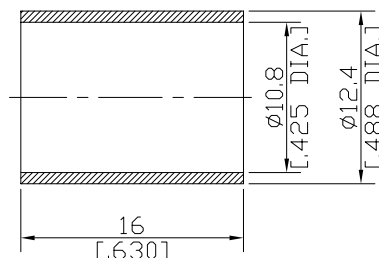
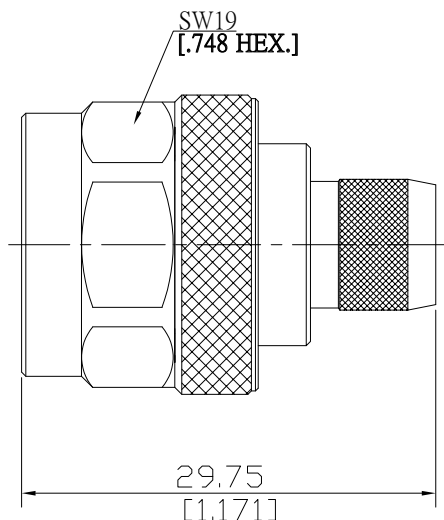
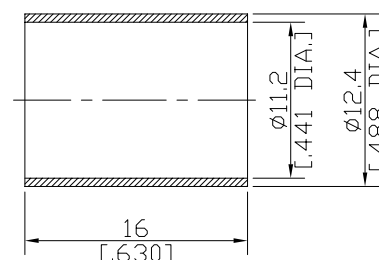


N Plug (Male) Cable Connector

N1C50-G213-214AA/144



RG 213



RG 214

All dimensions are in mm [inch]

Tolerances according to DIN ISO 2768-mH

**Interface**

According to IEC 61169-16; MIL-STD-348A/304

**Electrical Data**

Impedance 50  $\Omega$   
Frequency DC to 6 GHz  
VSWR (Return loss)  $\leq 1.20$  ( $\geq 20.83$  dB)

- Limitations are possible due to the used cable type and manufacturing method -

**Mechanical Data**

Coupling mechanisms Screw-lock  
Centre contact Solder or Crimp  
Cable entry Crimp

**Environmental Data**

Temperature range -65°C to +165°C  
RoHS compliant  
REACH compliant

**Material And Plating**

Connector parts	Material	Plating
Centre contact	Brass	Gold plating(Nickel underplated)
Body	Brass	Copper-Tin-Zinc Alloy
Insulator	PTFE	
Gasket	Silicone Rubber	
Coupling nut	Brass	Copper-Tin-Zinc Alloy

**Suitable Cables**

RG-213, RG-214, RG-393

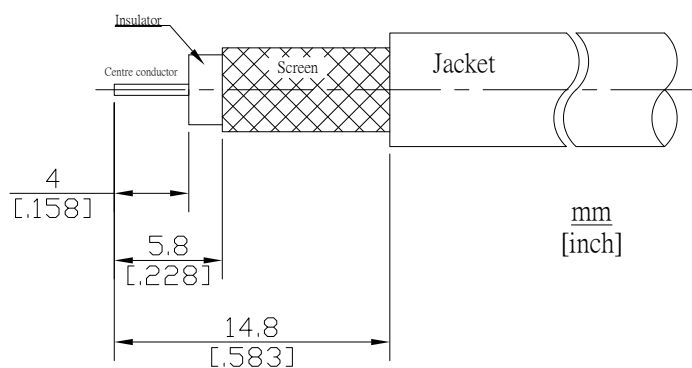
**Packing**

Single or 100

N Plug (Male) Cable Connector

N1C50-G213-214AA/144

Cable Stripping Dimensions



Crimp Dimensions [HEX]

Crimp ferrule	10.90mm [.429 inch]
Centre contact	2.54mm [.100 inch]