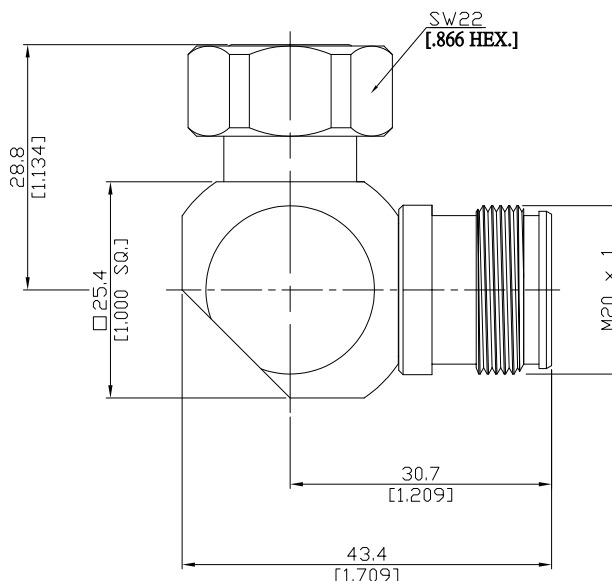
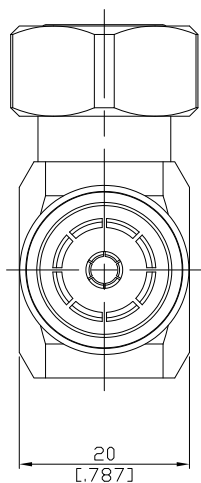


L-adaptor plug/jack
4.3/10 plug (male) / 4.3/10 jack (female)

ADL-43101431025A/H44-H4



All dimensions are in mm [inch]

Tolerances according to DIN ISO 2768-mH

Interface

4.3/10 according to IEC 61169-54

Electrical Data

Impedance 50 Ω
Frequency DC to 6 GHz
VSWR (Return Loss) ≤ 1.25 (≥ 19.08 dB)
Insertion Loss $\leq 0.05 \times \sqrt{F}$ (GHz) dB

Mechanical Data

Coupling mechanisms 4.3/10 (Screw-lock); 4.3/10 (Screw-lock)
Weight N/A

Environmental Data

Temperature range -40°C to +85°C
RoHS compliant

Material And Plating

Piece Parts (4.3/10)	Material	Plating
Centre contact	Phosphor Bronze	Gold plating (without Nickel underplating)
Body	Brass	Copper-Tin-Zinc Alloy
Insulator	PTFE	
Gasket	Silicone Rubber	
Coupling nut	Brass	Copper-Tin-Zinc Alloy

Piece Parts (4.3/10)	Material	Plating
Centre contact	Phosphor Bronze	Gold plating (without Nickel underplating)
Body	Brass	Copper-Tin-Zinc Alloy
Insulator	PTFE	

Packing

Single or 100